
The Municipality of
Powassan
The Heart of Good Living

Community Profile



466 Main Street
PO Box 250
Powassan ON POH 1Z0
(705) 724-2813
info@powassan.net
www.powassan.net

February 2013

© 2013 Municipality of Powassan

This document contains information that is subject to change without notice. All data is believed to be accurate, but the reader is advised to verify data before reaching decisions based upon information contained within this document. All marks are the property of their respective owners.

For further information please contact:

Kimberly Bester-Melanson
The Municipality of Powassan
466 Main Street, PO Box 250
Powassan, ON
POH 1Z0
Canada

Phone: 705-724-2813

Fax: 705-724-5533

Email: Kbester-Melanson@powassan.net

Web: www.Powassan.net

Table of Contents

1	INTRODUCTION	1
1.1	Location.....	2
1.2	Climate	3
2	DEMOGRAPHICS.....	4
2.1	Population Size and Growth.....	4
2.2	Age Profile	5
2.3	Language Characteristics.....	6
2.4	Mobility Characteristics	7
2.5	Level of Education	8
2.6	Income.....	10
3	LABOUR FORCE	13
3.1	Key Indicators	13
3.2	Labour Force by Occupation	14
3.3	Labour Force by Industry	17
3.4	Place of Work.....	18
3.5	Net Import & Export of Labour Force.....	19
3.6	General Wages by Occupation	20
4	KEY INDUSTRIES	24
4.1	Largest Employers.....	24
5	TRANSPORTATION FACILITIES	25
5.1	Highways.....	25
5.2	Rail Service	26
5.3	Airports.....	27
5.4	Port.....	28
5.5	Bus.....	29
6	TAXES AND UTILITIES.....	30
6.1	Local Property Tax Rates	30
6.2	Federal and Provincial Income Tax Rates	31
6.3	Electricity	33
6.4	Natural Gas.....	35
6.5	Waste Management	37
6.6	Water and Sanitary Sewer	39
6.7	Communications Infrastructure	41
7	BUILDING AND DEVELOPMENT RELATED FEES.....	44
7.1	Development Related Fees	44
7.2	Development Charges	45
8	INDUSTRIAL PARKS.....	46
8.1	Industrial Parks.....	46
9	POWASSAN LAND INVENTORY.....	46
10	BUSINESS SUPPORT PROGRAMS AND SERVICES	47
10.1	Government Services	47
10.2	Chamber of Commerce and Business Associations	49
10.3	Education, Employment and Training Services	50
10.4	Area Financial Institutions	52
10.5	Real Estate.....	52
10.6	Economic Development	53
11	QUALITY OF LIFE.....	54
11.1	Housing Characteristics.....	54
11.2	Health and Social Services	54
11.3	Education.....	58
11.4	Protective Services	60
11.5	Recreation, Tourism and Events.....	61

Powassan Community Profile 2013

11.6 Events 66
11.7 Local Media..... 67
12 LOCAL ACCOMMODATIONS 68
APPENDIX - INCENTIVES 69

Powassan Community Profile 2013

List of Tables

Table 1: Powassan Average Temperature (°C).....	3
Table 2: Powassan Average Precipitation	3
Table 3: Population Change and Projection	4
Table 4: Age Distribution.....	6
Table 5: Language Characteristics, 2012.....	6
Table 6: Powassan Mobility Rates	7
Table 7: Education Attainment, 2012.....	9
Table 8: Total Income Levels, 2011.....	10
Table 9: Family Income Levels, 2011	11
Table 10: Household Income Levels, 2011	12
Table 11: Labour Force Characteristics, 2012.....	13
Table 12: Labour Force by Occupation, 2012.....	15
Table 13: Labour Force by Industry, 2012	17
Table 14: Where the Powassan Resident Labour Force Works, 2006	18
Table 15: Place of Residence for Persons Working in Powassan, 2006	18
Table 16: Net Import-Export of Labour Force for Powassan, 2006	19
Table 17: General Wages by Occupation	20
Table 18: Largest Private Sector Employers	24
Table 19: Largest Public Sector Employers.....	24
Table 20: Distance to Urban Centres	25
Table 21: Distance to Major US Border Crossings.....	25
Table 22: Local Property Tax Rates, 2010	30
Table 23: Corporate Taxes – Non-Canadian Controlled	31
Table 24: Corporate Taxes – Canadian Controlled.....	31
Table 25: Ontario's Capital Tax Elimination Plan	31
Table 26: Personal Income Tax, 2013.....	32
Table 27: Sales Tax.....	32
Table 28: Hydro One Residential Electricity Rates.....	33
Table 29: Hydro One Small Business Electricity Rates (Less than 50 kW per month)	34
Table 30: Hydro One Small Business Electricity Rates (More than 50 kW per month)	34
Table 31: Union Gas - Regional Residential Rates (Rate 301).....	35
Table 32: Union Gas - Small Commercial Rates (Rate 310).....	36
Table 33: Waste Disposal Site.....	38
Table 34: Water and Sewer	40
Table 35: Communications Infrastructure	41
Table 36: Development-related Application Fees*	44
Table 37: Industrial Parks Available	46
Table 38: Industrial Land	46
Table 39: Commercial Land.....	46
Table 40: Research & Development Facilities within 80 km	53
Table 42: Residential Assessment Property Values, MPAC 2008.....	54
Table 43: Dwelling Characteristics for Powassan, 2012	54
Table 44: Public Schools	59
Table 45: Catholic Schools	59
Table 46: Tourism Facilities.....	61
Table 47: Annual Events 2010	66
Table 48: Newspapers.....	67
Table 49: Radio Stations	67
Table 50: Cable Service	67
Table 51: Television.....	67

List of Figures

Figure 1: Powassan Location Map..... 2
Figure 2: Age Distribution Chart, 2012..... 5
Figure 3: Education Attainment, 2012 8
Figure 4: Labour Force by Occupation, 2012 14

1 Introduction

The Municipality of Powassan, located near North Bay, is situated in the Parry Sound District at its easternmost boundary with the Nipissing District. The municipality includes South Himsworth and the population centres of Powassan and Trout Creek, both along Highway 11.

Powassan is an ideal location for small businesses, offering expanded building potential, relatively low taxes, no development fees, affordable housing and ready access to transportation corridors. Powassan also has land available for the market gardener, equine enthusiast, hobby farmer or woodsman.

Powassan is the heart of good living, surrounded by natural tranquility, yet just minutes from city amenities. A community, which ideally suited to families of all ages, celebrates the changing seasons with festivals, special events and fairs, all featuring family entertainment and activities for all ages. Powassan offers a unique quality of life with excellent medical professionals, schools, churches, recreation facilities, a state of the art library, large grocery store and rural downtown business areas. Families will find a myriad of year round activities that include beach side picnics, swimming, boating, fishing, hunting, hiking, ATVing, horseback riding, skiing, snowmobiling, ice fishing, and skating. Organized sports activities provide opportunities to take part in baseball, soccer, line dancing, aerobics, figure skating, hockey and curling. You can also take part in less active recreational pursuits such as weekly darts and card games, quilting bees, book and hobby clubs, and youth and seniors organizations.

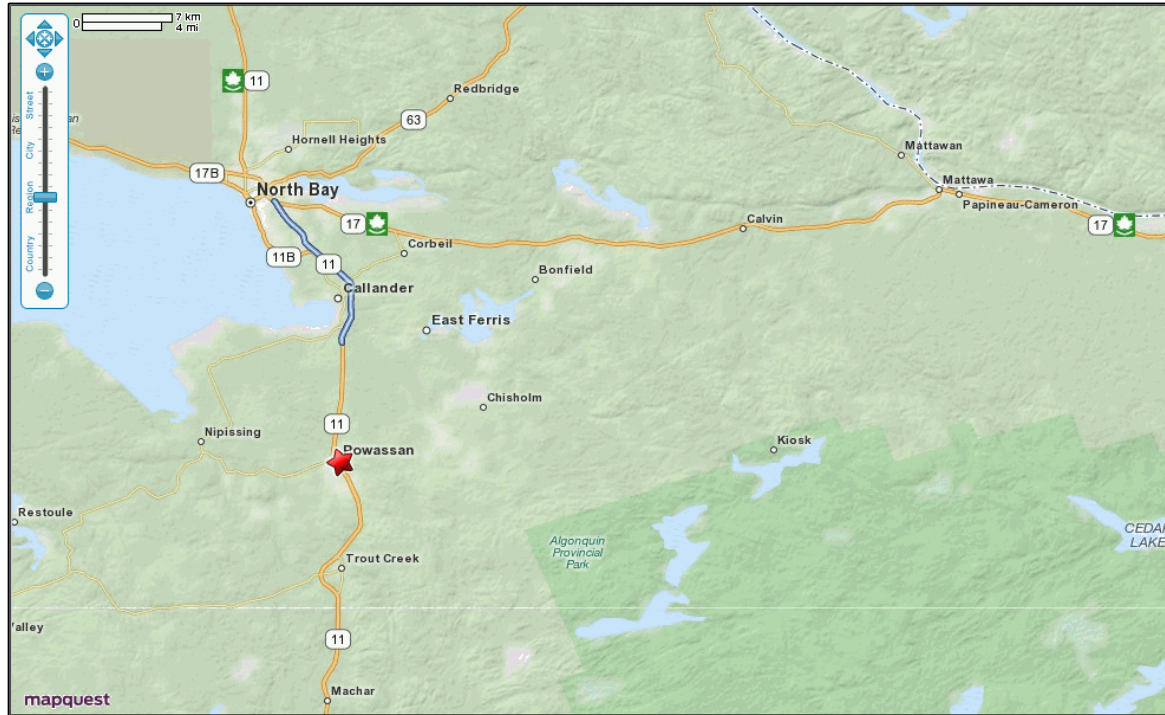
This quiet, rural lifestyle is just a twenty minute drive from the city of North Bay which offers a vibrant selection of cultural activities, including theatres, museums and art galleries as well as dining and shopping options. Surrounding smaller communities are home to many talented artisans whose shops and studios add to the rich and varied makeup that truly makes Powassan "the heart of good living".

Powassan Community Profile 2013

1.1 Location

Powassan is located near North Bay, Ontario, Canada in the Parry Sound District, at its easternmost boundary with the Nipissing District.

Figure 1: Powassan Location Map



Source: <http://www.mapquest.com/>

Powassan Community Profile 2013

1.2 Climate

Powassan derives climatic data from the Powassan* Station¹.

Table 1: Powassan Average Temperature (°C)

Temperature	Jan	Feb	Mar	Apr	May	Jun	Jul	Aug	Sep	Oct	Nov	Dec
Daily Average	-13	-10.5	-4.3	4.1	11.6	16.1	18.7	17.3	12.6	6.4	-0.4	-8.5
Standard Deviation	3.4	3.4	2.2	2.1	1.9	1.4	1.1	1.2	1.2	1.4	1.8	4
Daily Maximum	-7.1	-4.7	1.4	9.7	18.2	22.5	25.1	23.4	17.9	10.9	3.3	-3.7
Daily Minimum	-18	-16.2	-10	-1.6	5	9.5	12.3	11.2	7.2	1.8	-4.2	-13.2
Extreme Maximum	13	14.5	20.6	31	32.2	34	36	34.5	31.5	26	18.9	17.5
Extreme Minimum	-44	-42	-35	-20	-5.6	-2	1.5	-0.5	-6	-9.4	-29	-40.5

Source: Environment Canada, Powassan* Station.

Table 2: Powassan Average Precipitation

Precipitation	Jan	Feb	Mar	Apr	May	Jun	Jul	Aug	Sep	Oct	Nov	Dec
Rainfall (mm)	13.5	9.8	31	46.3	75.2	89.1	101.8	97.3	112.1	87	54.5	19.7
Snowfall (cm)	45.4	34.3	28.1	15.2	2.4	0	0	0	0.1	4.6	28.7	39.8
Precipitation (mm)	58.9	44	59.1	61.5	77.6	89.1	101.8	97.3	112.1	91.6	83.2	59.5
Extreme Daily Rainfall (mm)	19.6	21.6	45	40.4	46.8	53.6	89.4	57.6	122	54	41.6	36.8
Extreme Daily Snowfall (cm)	20	43	20.6	20.3	16	0	0	0	1.6	14	26.6	21
Extreme Daily Precipitation (mm)	22	44.4	45	40.4	46.8	53.6	89.4	57.6	122	54	41.6	36.8
Extreme Snow Depth (cm)	74	84	96	70	9	0	0	0	0	14	36	51

Source: Environment Canada, Powassan* Station.

¹ Stations with a '*' indicate that this station meets the United Nation's World Meteorological Organization WMO standards.

Powassan Community Profile 2013

2 Demographics

2.1 Population Size and Growth

Table 3: Population Change and Projection

	2001	2006	2012*
Powassan Population Count	3,252	3,309	3,478
% Change from Previous Census		1.8	

	2001	2006	2012*
Ontario Population Count	11,410,046	12,160,282	13,324,854
% Change from Previous Census		6.6	

	2017	2022
Powassan Projected Population	3,560	3,634
% Change		2.08

	2017	2022
Ontario Projected Population	14,242,936	15,170,152
% Change		6.51

Source: Statistics Canada, 2007. 2006 Community Profiles. 2006 Census.

Statistics Canada Catalogue no. 92-591-XWE. Ottawa. Released March 13, 2007.

<http://www12.statcan.ca/english/census06/data/profiles/community/index.cfm?Lang=E>

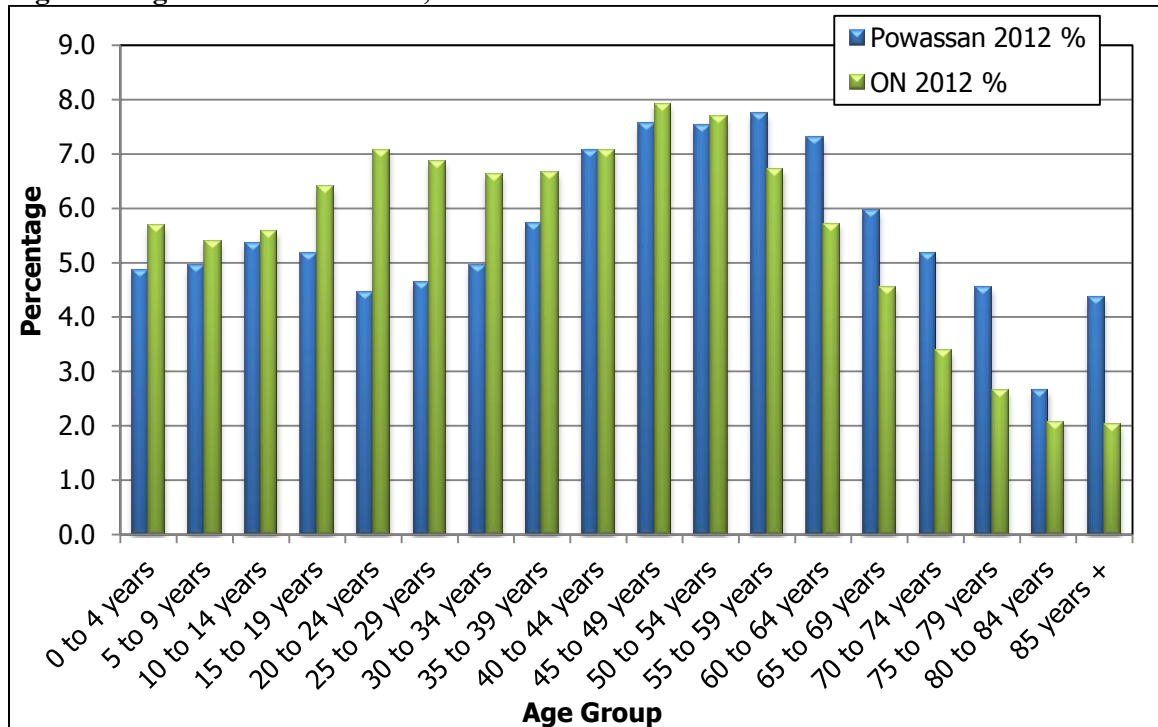
* Estimated McSweeney & Associates from Manifold Data Mining Inc. Superdemographics 2012

Powassan Community Profile 2013

2.2 Age Profile

In 2012, Powassan had an older population compared to the provincial average. The municipality has *Eastholme, Home for the Aged* in Powassan and *Lady Isabelle Nursing Home* in Trout Creek. Estimates show that the percentage of the total population between the ages of 0-54 is below the provincial average, while the percentages for those aged 55+ is above the provincial average.

Figure 2: Age Distribution Chart, 2012



Source: McSweeney & Associates from Manifold Data Mining Inc. Superdemographics 2012.

Powassan Community Profile 2013

Table 4: Age Distribution

Characteristics	Powassan 2012	Powassan 2012 (%)	Ontario 2012 (%)
Age	3,478		13,324,854
0 to 4 years	169	4.9	5.7
5 to 9 years	172	4.9	5.4
10 to 14 years	186	5.3	5.6
15 to 19 years	180	5.2	6.4
20 to 24 years	155	4.5	7.1
25 to 29 years	161	4.6	6.9
30 to 34 years	172	4.9	6.6
35 to 39 years	199	5.7	6.7
40 to 44 years	246	7.1	7.1
45 to 49 years	263	7.6	7.9
50 to 54 years	262	7.5	7.7
55 to 59 years	269	7.7	6.7
60 to 64 years	254	7.3	5.7
65 to 69 years	207	6.0	4.5
70 to 74 years	180	5.2	3.4
75 to 79 years	158	4.5	2.7
80 to 84 years	92	2.6	2.1
85 years and over	152	4.4	2.0

Source: McSweeney & Associates from Manifold Data Mining Inc. Superdemographics 2012.

2.3 Language Characteristics

Table 5 indicates almost all people in Powassan speak English only, and the percentage is higher than Ontario. There are 10.1% residents (lower than Ontario) in Powassan who are bilingual.

Table 5: Language Characteristics, 2012

Characteristics	Powassan	Powassan (%)	Ontario (%)
Total population	3,478		13,324,854
English only	3,116	89.6	86.0
French only	0	0.0	0.4
English and French	352	10.1	11.4
Other language(s)	10	0.3	2.2

Source: McSweeney & Associates from Manifold Data Mining Inc. Superdemographics 2012.

Powassan Community Profile 2013

2.4 Mobility Characteristics

Estimates indicate people moving to Powassan tend to be relocating from other parts of Ontario as opposed to moving from outside of the province or country.

Table 6: Powassan Mobility Rates

Characteristics	Powassan 2012	Powassan 2012 (%)	Ontario 2012 (%)
Mobility status – place of residence one year ago			
Total population 1 year and over ²	3,478		
Non-movers ³	3,018	86.8	86.9
Movers ⁴	460	13.2	13.1
Non-migrants ⁵	219	6.3	7.8
Migrants ⁶	241	6.9	5.3
Migrants within Canada	230	6.6	4.2
Migrants from outside Canada	219	6.3	3.8
Migrants within Ontario	11	0.3	0.5
Migrants from outside Ontario	11	0.3	1.1
Mobility status – place of residence status five years ago			
Total population 5 years and over	3,478		
Non-movers	2,468	71.0	59.2
Movers	1,010	29.0	40.8
Non-migrants	485	13.9	22.0
Migrants	525	15.1	18.8
Migrants within Canada	525	15.1	13.9
Migrants from outside Canada	504	14.5	12.3
Migrants within Ontario	21	0.6	1.6
Migrants from outside Ontario	0	0.0	4.9

Source: McSweeney & Associates from Manifold Data Mining Inc. Superdemographics 2012.

² Refers to the relationship between a person's usual place of residence on Census Day and his or her usual place of residence one year earlier. A person is classified as a non-mover if no difference exists. Otherwise, a person is classified as a mover and this categorization is called Mobility status (1 year ago). Within the category of movers, a further distinction is made between non-migrants and migrants; this difference is called migration status.

³ Non-movers are persons who, on Census Day, were living at the same address as the one at which they resided one year earlier.

⁴ Movers are persons who, on Census Day, were living at a different address from the one at which they resided one year earlier.

⁵ Non-migrants are movers who, on Census Day, were living at a different address, but in the same census subdivision (CSD) as the one they lived in one year earlier.

⁶ Migrants are movers who, on Census Day, were residing in a different CSD one year earlier (internal migrants) or who were living outside Canada one year earlier (external migrants).

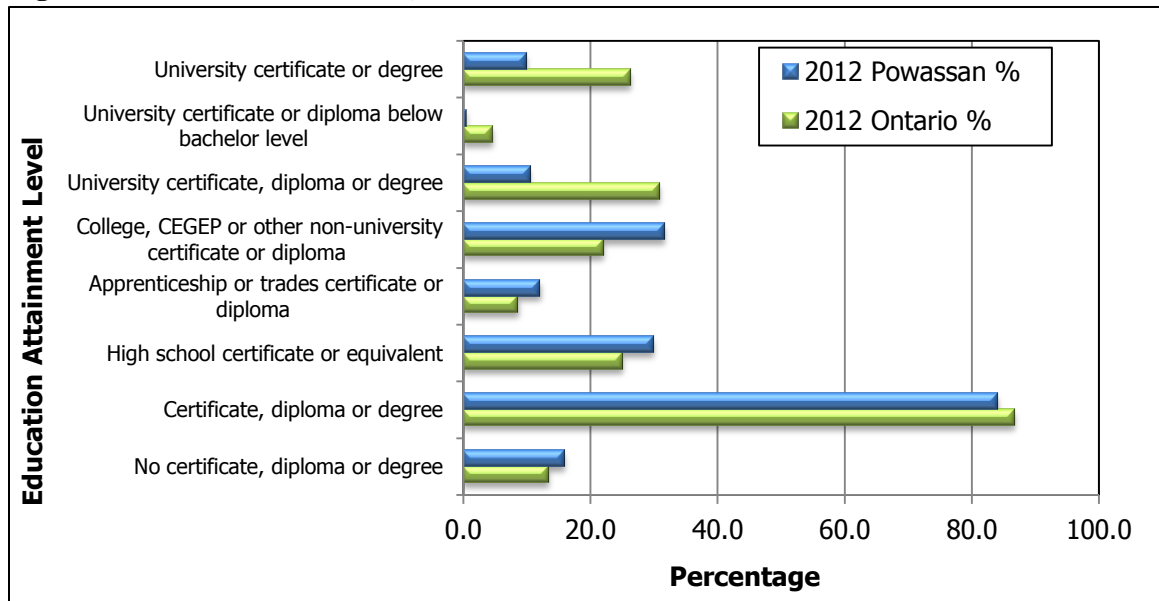
Powassan Community Profile 2013

2.5 Level of Education

Figure 3 and Table 7 indicate the level of education attainment in Powassan in 2012.

- Roughly 84% of Powassan residents have a certificate, diploma or degree. Although this is lower than the overall provincial average, Powassan does have a higher percentage of persons with a college, CEGEP or other non-university certificate or diploma than the provincial average.
- The percentage of persons with university education is less than half of the provincial average.

Figure 3: Education Attainment, 2012



Source: McSweeney & Associates from Manifold Data Mining Inc. Superdemographics 2012.

Powassan Community Profile 2013

Table 7: Education Attainment, 2012

Characteristics ⁷	Powassan	Powassan (%)	Ontario (%)
Total population 25 to 64 years	1,826		7,359,625
No certificate, diploma or degree	291	15.9	13.4
Certificate, diploma or degree	1,535	84.1	86.6
High school certificate or equivalent	545	29.8	25.1
Apprenticeship or trades certificate or diploma	221	12.1	8.6
College, CEGEP or other non-university certificate or diploma	578	31.7	22.0
University certificate, diploma or degree	191	10.5	30.9
University certificate or diploma below bachelor level	10	0.5	4.6
University certificate or degree	181	9.9	26.3
Bachelor's degree	77	4.2	16.3
University certificate or diploma above bachelor level	81	4.4	3.1
Degree in medicine, dentistry, veterinary medicine or optometry	0	0.0	0.7
Master's degree	23	1.3	5.3
Earned doctorate	0	0.0	0.8

Source: McSweeney & Associates from Manifold Data Mining Inc. Superdemographics 2012.

⁷ By highest certificate, diploma or degree obtained.

Powassan Community Profile 2013

2.6 Income

Table 8 indicates that, in 2011, the average total income levels were lower in Powassan than in Ontario.

Table 8: Total Income Levels, 2011

Characteristic	Powassan	Powassan (%)	Ontario (%)
Total population 15 years and over (by income 2011)	2,950		
Without income	132	4.5	4.7
With income	2,818	95.5	95.3
Under \$1,000	42	1.4	4.0
\$1,000 to \$2,999	135	4.6	3.3
\$3,000 to \$4,999	103	3.5	3.1
\$5,000 to \$6,999	79	2.7	3.3
\$7,000 to \$9,999	149	5.1	5.4
\$10,000 to \$11,999	96	3.3	3.9
\$12,000 to \$14,999	293	9.9	5.6
\$15,000 to \$19,999	416	14.1	8.4
\$20,000 to \$24,999	240	8.1	7.0
\$25,000 to \$29,999	164	5.6	6.2
\$30,000 to \$34,999	208	7.1	6.3
\$35,000 to \$39,999	220	7.5	5.7
\$40,000 to \$44,999	160	5.4	5.0
\$45,000 to \$49,999	82	2.8	4.2
\$50,000 to \$59,999	176	6.0	6.7
\$60,000 and over	256	8.7	17.2
Characteristic	Powassan		Ontario
Median total income \$	22,919		31,800
Average total income \$	33,720		45,692
Standard error of average total income \$	1,203		69

Source: McSweeney & Associates from Manifold Data Mining Inc. Superdemographics 2012 (2011 incomes).

Powassan Community Profile 2013

Table 9 indicates that, in 2011, families residing in Powassan earned a lower average family income compared to Ontario averages.

Table 9: Family Income Levels, 2011

Characteristic	Powassan	Powassan (%)	Ontario (%)
Total number of economic families (by income in 2011)	1,007		
Under \$10,000	21	2.1	2.3
\$10,000 to \$19,999	50	5.0	3.8
\$20,000 to \$29,999	129	12.8	6.6
\$30,000 to \$39,999	132	13.1	8.4
\$40,000 to \$49,999	107	10.6	8.7
\$50,000 to \$59,999	138	13.7	8.5
\$60,000 to \$69,999	70	7.0	8.4
\$70,000 to \$79,999	99	9.8	8.0
\$80,000 to \$89,999	82	8.1	7.3
\$90,000 to \$99,999	30	3.0	6.4
\$100,000 and over	150	14.9	31.8
Characteristic	Powassan		Ontario
Median family income \$	62,863		89,040
Average family income \$	75,342		110,037
Standard error of average family income \$	2,970		111
Composition of family income in 2011 for all economic families%	100		100
Employment income %	73.51		78.64
Government transfer payments %	12.68		10.59
Other %	13.81		10.78

Source: McSweeney & Associates from Manifold Data Mining Inc. Superdemographics 2012 (2011 incomes).

Powassan Community Profile 2013

Table 10 demonstrates that, in 2011, the average income for households in Powassan was lower in comparison to households in Ontario.

Table 10: Household Income Levels, 2011

Characteristic	Powassan	Powassan (%)	Ontario (%)
Total number of private households (by income in 2011)	1,333		
Under \$10,000	47	3.5	4.1
\$10,000 to \$19,999	182	13.7	8.4
\$20,000 to \$29,999	176	13.2	8.9
\$30,000 to \$39,999	154	11.6	9.7
\$40,000 to \$49,999	137	10.3	9.2
\$50,000 to \$59,999	168	12.6	8.4
\$60,000 to \$69,999	105	7.9	7.9
\$70,000 to \$79,999	105	7.9	7.1
\$80,000 to \$89,999	93	7.0	6.2
\$90,000 to \$99,999	28	2.1	5.2
\$100,000 and over	137	10.3	25.0
Characteristic	Powassan		Ontario
Median household income \$	52,681		70,135
Average household income \$	65,622		90,979
Standard error of average household income \$	2,541		98

Source: McSweeney & Associates from Manifold Data Mining Inc. Superdemographics 2012 (2011 incomes).

3 Labour Force

3.1 Key Indicators

Powassan is home to a 2,950 person strong labour force. As illustrated in Table 11, Powassan's labour participation and employment rates are lower compared to Ontario, however the unemployment rate is higher than the provincial average.

Table 11: Labour Force Characteristics, 2012⁸

Characteristic	Powassan	Ontario
Total population, aged 15 years and older	2,950	11,106,547
In the labour force ⁹	1,757	7,374,818
Employed	1,615	6,787,409
Unemployed	142	587,409
Not in the labour force	1,193	3,731,728
Participation rate %	59.6	66.4
Employment rate %	54.8	61.1
Unemployment rate %	8.1	8.0

Source: McSweeney & Associates from Manifold Data Mining Inc. Superdemographics 2012.

⁸ Participation rate % = labourforce/total population aged 15 and over

Employment rate % = employed/totalpopulation aged 15 and over

Unemployment rate % = unemployed/labourforce

⁹ Labour force - Refers to persons who were either employed or unemployed.

Unemployed - Refers to persons 15 years and over, excluding institutional residents, who, during the week (Sunday to Saturday) prior to Census Day (May 16, 2006), were without paid work or without self-employment work and were available for work and either:

(a) had actively looked for paid work in the past four weeks;
 (b) were on temporary lay-off and expected to return to their job;
 (c) had definite arrangements to start a new job in four weeks or less.

Participation rate - Refers to the labour force expressed as a percentage of the population 15 years and over excluding institutional residents.

Employment rate - Refers to the number of persons employed expressed as a percentage of the total population 15 years and over excluding institutional residents.

Unemployment rate - Refers to the unemployed expressed as a percentage of the labour force.

3.2 Labour Force by Occupation

Figure 4 and Table 12 illustrate Powassan’s labour force make up by occupation:

- Accounting for 23% of the labour force, sales and service occupations represent the largest occupational group in Powassan.
- The percentage of the labour force in trades, transport and equipment operators and related occupational experience occupation is also large.

Figure 4: Labour Force by Occupation¹⁰, 2012



Source: McSweeney & Associates from Manifold Data Mining Inc. Superdemographics 2012.

¹⁰ Percentage calculated based on all occupations excludes occupation-not applicable.

Powassan Community Profile 2013

Table 12: Labour Force by Occupation, 2012

Characteristic ¹¹	Powassan	Powassan (%)	Ontario (%)
Total labour force aged 15 years and over by occupation	1,757		
Occupation - Not applicable	43	2.4	1.5
All occupations	1,714	97.6	98.4
A Management occupations	123	7.0	10.2
A0 Senior management occupations	13	0.7	1.3
A1 Specialist managers	38	2.2	3.0
A2 Managers in retail trade, food and accommodation services	36	2.0	2.7
A3 Other managers, n.e.c.	36	2.0	3.2
B Business, finance and administration occupations	176	10.0	18.6
B0 Professional occupations in business and finance	5	0.3	2.8
B1 Finance and insurance administration occupations	11	0.6	1.2
B2 Secretaries	17	1.0	1.4
B3 Administrative and regulatory occupations	14	0.8	2.2
B4 Clerical supervisors	1	0.1	0.5
B5 Clerical occupations	128	7.3	10.5
C Natural and applied sciences and related occupations	28	1.6	6.8
C0 Professional occupations in natural and applied sciences	9	0.5	4.1
C1 Technical occupations related to natural and applied sciences	19	1.1	2.7
D Health occupations	129	7.3	5.1
D0 Professional occupations in health	6	0.3	1.1
D1 Nurse supervisors and registered nurses	24	1.4	1.5
D2 Technical and related occupations in health	3	0.2	1.1
D3 Assisting occupations in support of health services	97	5.5	1.4
E Occupations in social science, education, government service and religion	203	11.6	8.2
E0 Judges, lawyers, psychologists, social workers, ministers of religion, and policy and program officers	25	1.4	2.3
E1 Teachers and professors	96	5.5	4.0
E2 Paralegals, social services workers and occupations in education and religion, n.e.c.	82	4.7	2.0
F Occupations in art, culture, recreation and sport	20	1.1	3.0
F0 Professional occupations in art and culture	20	1.1	1.3
F1 Technical occupations in art, culture, recreation and sport	0	0.0	1.6

¹¹ National Occupational Classification for Statistics 2006 – 20% sample data.

Powassan Community Profile 2013

Characteristic	Powassan	Powassan (%)	Ontario (%)
G Sales and service occupations	400	22.8	23.3
G0 Sales and service supervisors	11	0.6	0.8
G1 Wholesale, technical, insurance, real estate sales specialists, and retail, wholesale and grain buyers	20	1.1	2.2
G2 Retail salespersons and sales clerks	59	3.4	4.5
G3 Cashiers	24	1.4	1.8
G4 Chefs and cooks	0	0.0	1.2
G5 Occupations in food and beverage service	10	0.6	1.4
G6 Occupations in protective services	45	2.6	1.6
G7 Occupations in travel and accommodation, including attendants in recreation and sport	0	0.0	0.8
G8 Child care and home support workers	89	5.1	1.4
G9 Sales and service occupations, n.e.c.	141	8.0	7.7
H Trades, transport and equipment operators and related occupations	370	21.1	13.9
H0 Contractors and supervisors in trades and transportation	14	0.8	0.7
H1 Construction trades	48	2.7	2.3
H2 Stationary engineers, power station operators and electrical trades and telecommunications occupations	35	2.0	0.9
H3 Machinists, metal forming, shaping and erecting occupations	9	0.5	1.3
H4 Mechanics	75	4.3	2.1
H5 Other trades, n.e.c.	10	0.6	0.7
H6 Heavy equipment and crane operators, including drillers	21	1.2	0.4
H7 Transportation equipment operators and related workers, excluding labourers	100	5.7	3.2
H8 Trades helpers, construction and transportation labourers and related occupations	57	3.2	2.3
I Occupations unique to primary industry	124	7.1	2.4
I0 Occupations unique to agriculture, excluding labourers	86	4.9	1.4
I1 Occupations unique to forestry operations, mining, oil and gas extraction and fishing, excluding labourers	15	0.9	0.2
I2 Primary production labourers	23	1.3	0.7
J Occupations unique to processing, manufacturing and utilities	140	8.0	6.9
J0 Supervisors in manufacturing	0	0.0	0.4
J1 Machine operators in manufacturing	73	4.2	2.5
J2 Assemblers in manufacturing	14	0.8	2.4
J3 Labourers in processing, manufacturing and utilities	53	3.0	1.6

Source: McSweeney & Associates from Manifold Data Mining Inc. Superdemographics 2012.

Powassan Community Profile 2013

3.3 Labour Force by Industry

The largest percentage of labour force (by industry) in Powassan is employed in the Health care and social assistance industry which accounts for 17.2% of the labour force compared to 9.4% for Ontario. The percentages of labour force in the Retail trade industry in Powassan are also high. The following table indicates Powassan's labour force experience by industry.

Table 13: Labour Force by Industry, 2012

Characteristic ¹²	Powassan	Powassan (%)	Ontario (%)
Total labour force 15 years and over by industry	1,757		
Industry - Not applicable	39	2.2	1.5
All industries	1,718	97.8	98.4
11 Agriculture, forestry, fishing and hunting	105	6.0	1.6
21 Mining and oil and gas extraction	12	0.7	0.4
22 Utilities	24	1.4	0.7
23 Construction	131	7.5	5.9
31-33 Manufacturing	132	7.5	13.9
41 Wholesale trade	74	4.2	4.7
44-45 Retail trade	265	15.1	11.1
48-49 Transportation and warehousing	125	7.1	4.7
51 Information and cultural industries	24	1.4	2.6
52 Finance and insurance	25	1.4	4.8
53 Real estate and rental and leasing	9	0.5	1.9
54 Professional, scientific and technical services	9	0.5	7.2
55 Management of companies and enterprises	0	0.0	0.1
56 Administrative and support, waste management and remediation services	95	5.4	4.7
61 Educational services	201	11.4	6.6
62 Health care and social assistance	302	17.2	9.4
71 Arts, entertainment and recreation	36	2.0	2.1
72 Accommodation and food services	53	3.0	6.2
81 Other services (except public administration)	49	2.8	4.5
91 Public administration	48	2.7	5.4

Source: McSweeney & Associates from Manifold Data Mining Inc. Superdemographics 2012.

¹² North American Industry Classification System 2002 - 20% sample data.

Powassan Community Profile 2013

3.4 Place of Work

The following two tables provide information on persons reporting a “usual place of work other than in their home or outside of Canada”, and reveal the following regarding labour force commuting:

- The majority of the Powassan resident labour force who worked outside of Powassan commuted to work in North Bay.
- The largest number of non-resident labour force commuting to work in Powassan travelled from Nipissing and North Bay.
- 60.7% of the workers living in Powassan had a usual place of work outside of Powassan.
- 49.7% of workers declaring a usual place of work in Powassan lived outside of Powassan.

Table 14: Where the Powassan Resident Labour Force Works, 2006

Place of Residence	Total	Male	Female
Powassan	385	150	235
North Bay	465	215	245
South River	40	0	30
Sundridge	35	15	15
Callander	35	20	20
East Ferris	20	0	15
Total Resident Labour Force	980	400	560
<i>Total resident labour force with a usual place of work outside of Powassan</i>	<i>595</i>	<i>250</i>	<i>325</i>
<i>Percent of residents declaring a place of work outside of Powassan</i>	<i>60.7%</i>	<i>62.5%</i>	<i>58.0%</i>

Source: McSweeney & Associates, Statistic Canada, Commuting Flow Census Subdivisions: Sex (3) for the Employed Labour Force 15 Years and Over Having a Usual Place of Work of Census Subdivisions, Flows Greater than or Equal to 20, 2006 Census - 20% Sample Data. Statistics Canada - 2006 Census. Catalogue Number 97-561-XCB2006011. <http://www12.statcan.gc.ca/census-recensement/2006/dp-pd/tbt/Rp-eng.cfm?TABID=1&LANG=E&A=R&APATH=3&DETAIL=0&DIM=0&FL=A&FREE=0&GC=0&GID=3549060&GK=0&GRP=1&O=D&PID=90656&PRID=0&PTYPE=88971,97154&S=1&SHOWALL=0&SUB=0&Temporal=2006&THEME=76&VID=0&VNAMEE=&VNAMEF=>

Table 15: Place of Residence for Persons Working in Powassan, 2006

Place of Work	Total	Male	Female
Powassan	385	150	235
Nipissing	115	55	60
North Bay	85	30	50
Chisholm	65	25	40
Callander	50	25	25
Parry Sound, Unorganized, Centre Part	40	15	20
East Ferris	25	10	15
Total workforce working in Powassan	765	310	445
<i>Total non-resident workforce commuting to work to Powassan</i>	<i>380</i>	<i>160</i>	<i>210</i>
<i>Percent of workers (non-residents) commuting to work to Powassan</i>	<i>49.7%</i>	<i>51.6%</i>	<i>47.2%</i>

Source: McSweeney & Associates, Statistic Canada, Commuting Flow Census Subdivisions: Sex (3) for the Employed Labour Force 15 Years and Over Having a Usual Place of Work of Census Subdivisions, Flows Greater than or Equal to 20, 2006 Census - 20% Sample Data. Statistics Canada - 2006 Census. Catalogue Number 97-561-XCB2006011. <http://www12.statcan.gc.ca/census-recensement/2006/dp-pd/tbt/Rp-eng.cfm?TABID=1&LANG=E&A=W&APATH=3&DETAIL=0&DIM=0&FL=A&FREE=0&GC=0&GID=3549060&GK=0&GRP=1&O=D&PID=90656&PRID=0&PTYPE=88971,97154&S=1&SHOWALL=0&SUB=0&Temporal=2006&THEME=76&VID=0&VNAMEE=&VNAMEF=>

Powassan Community Profile 2013

3.5 Net Import & Export of Labour Force

The next table highlights industry sectors in which there is a net “export” or “import” of labour. In 2006, there were 955 jobs in Powassan, and an employed resident labour force of 1,445, indicating that Powassan was a net “exporter” of at least 490 employees. The net export/import calculation is simply the number of jobs in each of Powassan's industries minus the number of Powassan's residents working in that particular industry. It is important to note that the export/import numbers indicated under-represent the actual numbers of employees, as this calculation assumes all of the employed resident labour force in that industry works in Powassan.

The following table indicates that the size of the Powassan resident labour force greatly exceeds the jobs available in almost all Powassan industry sectors. **From the economic development point of view, this represents a potential opportunity to attract these industries, as there is a resident labour force commuting elsewhere to work in those industries.** Only the following industry sectors have more jobs than resident labour force in Powassan: Wholesale trade; Finance and insurance and Arts, entertainment and recreation.

Table 16: Net Import-Export of Labour Force for Powassan, 2006

Industry (NAICS)	Jobs in Powassan	Employed Resident Labour Force	Net exp (-)/imp(+) of Labour
Total - Industry - North American Industry Classification System 2002	955	1,445	-490
Agriculture, forestry, fishing and hunting	80	85	-5
Mining and oil and gas extraction	0	15	-15
Utilities	0	20	-20
Construction	40	100	-60
Manufacturing	50	125	-75
Wholesale trade	65	60	5
Retail trade	140	185	-45
Transportation and warehousing	50	95	-45
Information and cultural industries	20	30	-10
Finance and insurance	35	25	10
Real estate and rental and leasing	20	25	-5
Professional, scientific and technical services	0	20	-20
Management of companies and enterprises	0	0	0
Administrative and support, waste management and remediation services	0	65	-65
Educational services	100	170	-70
Health care and social assistance	230	245	-15
Arts, entertainment and recreation	35	20	15
Accommodation and food services	25	40	-15
Other services (except public administration)	35	65	-30
Public administration	30	55	-25

Source: McSweeney & Associates from Statistics Canada, 2006 Census <http://cscroute.mah.gov.on.ca/Reddi/>.

Powassan Community Profile 2013

3.6 General Wages by Occupation

The following table indicates the general wage rates for occupations in Northeastern Ontario.¹³

Table 17: General Wages by Occupation

Category	Average Wage (\$/hour)	High Wage (\$/hour)	Low Wage (\$/hour)
Legislators (NOC 0011-0)	10.25	20.43	38.28
Human Resources Managers (NOC 0112-0)	19.23	38.46	62.56
Other Administrative Services Managers (NOC 0114-0)	17.5	34.67	56.41
Banking, Credit and Other Investment Managers (NOC 0122-0)	19.49	34.62	57.69
Telecommunication Carriers Managers (NOC 0131-0)	20	41.54	67.87
Engineering Managers (NOC 0211-0)	21	44.47	67.31
Architecture and Science Managers (NOC 0212-0)	21	43	61.54
Computer and Information Systems Managers (NOC 0213-0)	22.6	40	58.65
Accommodation Service Managers (NOC 0632-0)	12.5	17.5	22.02
Commissioned Police Officers (NOC 0641-0)	33.56	40.96	44.54
Fire Chiefs and Senior Firefighting Officers (NOC 0642-0)	10.25	28.03	45.67
Residential Home Builders and Renovators (NOC 0712-0)	13	16.13	24.75
Facility Operation and Maintenance Managers (NOC 0721-0)	16.38	26.92	48.08
Primary Production Managers (Except Agriculture) (NOC 0811-0)	17.3	31.21	64.18
Manufacturing Managers (NOC 0911-0)	20.03	40.38	60.1
Utilities Managers (NOC 0912-0)	12.05	36.69	63.52
Financial Auditors and Accountants (NOC 1111-A)	16.82	28.85	51.28
Financial and Investment Analysts (NOC 1112-A)	18.46	31	51.65
Other Financial Officers (NOC 1114-A)	16.61	27.69	48.72
Supervisors, Mail and Message Distribution Occupations (NOC 1214-B)	16.25	25	30
Supervisors, Recording, Distributing and Scheduling Occupations (NOC 1215-B)	13	20.59	30.77
Administrative Officers (NOC 1221-B)	12.98	21	32.8
Executive Assistants (NOC 1222-B)	14	20.3	27.96
Personnel and Recruitment Officers (NOC 1223-B)	15	20.36	31.56
Purchasing Agents and Officers (NOC 1225-B)	15	25.3	38.46
Bookkeepers (NOC 1231-B)	11	18	29.81
Loan Officers (NOC 1232-B)	14.42	22	33.33
Insurance Adjusters and Claims Examiners (NOC 1233-B)	15.25	25	36.92

¹³ To see the whole list please click:
http://www.workingincanada.gc.ca/LMI_report_area.do?lang=eng&area=6363&reportOption=wage

Powassan Community Profile 2013

Category	Average Wage (\$/hour)	High Wage (\$/hour)	Low Wage (\$/hour)
Insurance Underwriters (NOC 1234-B)	11.25	19.23	28.72
Secretaries (Except Legal and Medical) (NOC 1241-B)	14	21	26
Medical Secretaries (NOC 1243-B)	12	20	25
Court Recorders and Medical Transcriptionists (NOC 1244-B)	16	22	36.06
General Office Clerks (NOC 1411-C)	10.25	15.25	26
Records Management and Filing Clerks (NOC 1413-C)	10.25	19.23	27
Receptionists and Switchboard Operators (NOC 1414-C)	10.25	16	23
Data Entry Clerks (NOC 1422-C)	10.5	16	26.41
Accounting and Related Clerks (NOC 1431-C)	11.7	21	25.7
Customer Service Representatives - Financial Services (NOC 1433-C)	11.5	15.04	22.5
Banking, Insurance and Other Financial Clerks (NOC 1434-C)	12	17	25.96
Collectors (NOC 1435-C)	10.38	19.49	29.23
Administrative Clerks (NOC 1441-C)	12	22	28.04
Court Clerks (NOC 1443-C)	13	22	28.04
Library Clerks (NOC 1451-C)	10.25	14.62	27
Correspondence, Publication and Related Clerks (NOC 1452-C)	11.18	15.29	50.08
Customer Service, Information and Related Clerks (NOC 1453-C)	10.25	13.3	25.86
Survey Interviewers and Statistical Clerks (NOC 1454-C)	11.05	14.74	18.07
Mail, Postal and Related Clerks (NOC 1461-C)	10.25	20	25
Couriers, Messengers and Door-to-Door Distributors (NOC 1463-C)	10.25	12.31	23.12
Shippers and Receivers (NOC 1471-C)	11	15.38	23.81
Storekeepers and Parts Clerks (NOC 1472-C)	10.25	15	21.06
Purchasing and Inventory Clerks (NOC 1474-C)	10.5	19.36	29
Chemists (NOC 2112-A)	20	30.77	53.33
Geologists, Geochemists and Geophysicists (NOC 2113-A)	19.49	37.5	64.1
Biologists and Related Scientists (NOC 2121-A)	14	29.81	52.2
Forestry Professionals (NOC 2122-A)	15	30	52.2
Civil Engineers (NOC 2131-A)	21.33	32.48	51.28
Mechanical Engineers (NOC 2132-A)	21.63	33.65	53.85
Electrical and Electronics Engineers (NOC 2133-A)	25	39	60
Chemical Engineers (NOC 2134-A)	19.23	32	52.88
Industrial and Manufacturing Engineers (NOC 2141-A)	24	33.65	53.14
Metallurgical and Materials Engineers (NOC 2142-A)	19.48	44.82	85.13
Mining Engineers (NOC 2143-A)	14.33	37.13	63.42
Architects (NOC 2151-A)	21.15	32	51.28
Land Surveyors (NOC 2154-A)	10.25	21.63	34.65
Database Analysts and Data Administrators (NOC 2172-A)	18.55	32.82	45.67

Powassan Community Profile 2013

Category	Average Wage (\$/hour)	High Wage (\$/hour)	Low Wage (\$/hour)
Software Engineers and Designers (NOC 2173-A)	24.04	37.98	58.17
Computer Programmers and Interactive Media Developers (NOC 2174-A)	18.6	33.65	47.18
Web Designers and Developers (NOC 2175-A)	14.42	27.78	42.05
Chemical Technologists and Technicians (NOC 2211-B)	13	25	36.94
Biological Technologists and Technicians (NOC 2221-B)	14.95	23	32.82
Forestry Technologists and Technicians (NOC 2223-B)	13	24	38.49
Conservation and Fishery Officers (NOC 2224-B)	20.08	27.52	31.76
Civil Engineering Technologists and Technicians (NOC 2231-B)	13	24.85	38.46
Mechanical Engineering Technologists and Technicians (NOC 2232-B)	15.65	25	43
Industrial Engineering and Manufacturing Technologists and Technicians (NOC 2233-B)	12.31	28.83	35.64
Construction Estimators (NOC 2234-B)	17	25	45.67
Electrical and Electronics Engineering Technologists and Technicians (NOC 2241-B)	15	23.13	40
Electronic Service Technicians (Household and Business Equipment) (NOC 2242-B)	12.5	22	39
Architectural Technologists and Technicians (NOC 2251-B)	13.94	23.08	38.46
Drafting Technologists and Technicians (NOC 2253-B)	14	23.33	35.35
Mapping and Related Technologists and Technicians (NOC 2255-B)	17.98	22.03	32.21
Construction Inspectors (NOC 2264-B)	19.38	30.77	42
Railway Traffic Controllers and Marine Traffic Regulators (NOC 2275-B)	24.21	27.83	45.72
Computer Network Technicians (NOC 2281-B)	14	27.69	46.15
User Support Technicians (NOC 2282-B)	12	23.56	39.34
General Practitioners and Family Physicians (NOC 3112-A)	54,241	199,995	295,669
Veterinarians (NOC 3114-A)	36,359	76,876	148,185
Chiropractors (NOC 3122-A)	21,956	51,060	109,237
Pharmacists (NOC 3131-A)	79,138	114,414	344,837
Dietitians and Nutritionists (NOC 3132-A)	19	30.77	39.5
Audiologists and Speech-Language Pathologists (NOC 3141-A)	24	40	50
Physiotherapists (NOC 3142-A)	16	35.58	43.59
Occupational Therapists (NOC 3143-A)	19.51	34	42.94
Head Nurses and Supervisors (NOC 3151-A)	19	36	47
Registered Nurses (NOC 3152-A)	22	36	42
Medical Laboratory Technologists and Pathologists' Assistants (NOC 3211-B)	16.45	33	42
Medical Laboratory Technicians (NOC 3212-B)	13.91	22.5	38
Veterinary and Animal Health Technologists and Technicians (NOC 3213-B)	11	14.5	18.5
Respiratory Therapists, Clinical Perfusionists and Cardiopulmonary Technologists (NOC 3214-B)	24.62	34.45	40

Powassan Community Profile 2013

Category	Average Wage (\$/hour)	High Wage (\$/hour)	Low Wage (\$/hour)
Medical Radiation Technologists (NOC 3215-B)	25	32	40
Medical Sonographers (NOC 3216-B)	22	35.5	42
Dental Hygienists and Dental Therapists (NOC 3222-B)	20.37	35	42
Midwives and Practitioners of Natural Healing (NOC 3232-B)	10.25	10.25	29.13
Licensed Practical Nurses (NOC 3233-B)	17	25	30
Ambulance Attendants and Other Paramedical Occupations (NOC 3234-B)	15.1	33.19	40
Other Technical Occupations in Therapy and Assessment (NOC 3235-B)	15	21.09	31.62
Dental Assistants (NOC 3411-C)	14	19	27.3
Nurse Aides, Orderlies and Patient Service Associates (NOC 3413-C)	14.03	19	23
Other Assisting Occupations in Support of Health Services (NOC 3414-C)	12	17.81	24
Lawyers and Quebec Notaries (NOC 4112-A)	50,971	114,226	228,701
Secondary School Teachers (NOC 4141-A)	24.04	38.46	51.1
Elementary School and Kindergarten Teachers (NOC 4142-A)	22	38.46	49.04
Social Workers (NOC 4152-A)	19.82	31.32	42
Family, Marriage and Other Related Counsellors (NOC 4153-A)	16.5	22.12	32.97

Source: Labour Market Information Service, Report generated on Jan 14, 2013,
http://www.workingincanada.gc.ca/LMI_report_area.do?lang=eng&area=6363&reportOption=wage

4 Key Industries

4.1 Largest Employers

Table 18: Largest Private Sector Employers

Name	Year Established	Product or Service	Sector	No. of Employees (approximate)
Bank of Nova Scotia	1905	banking	financial	19
Oshell's Valu Mart	1982	food	retail	35
Quality Hardwood	1978	wood products	manufacturing	40
Lady Isabelle Nursing Home	1978	seniors nursing	health care	82
Knowlton Ridge Equestrian Centre	2007	equestrian facility	sports and recreation	13
Trout Creek Planing Mill	1991	wood mill	forestry	7
Giesler Boat Builders	1940	boat manufacturing	manufacturing	6

Source: McSweeney & Associates from the Municipality of Powassan and http://www.sse.gov.on.ca/medt/investinontario/en/Pages/communities_majoremployers.aspx?mun_name=3549060&topic=1

Table 19: Largest Public Sector Employers

Name	Sector	No. of Employees (approximate)
Eastholme Home for the Aged	health care	125
Municipality of Powassan	government	18
Mapleridge Public School	education	24
St. Gregory's School	education	25

Source: McSweeney & Associates from the Municipality of Powassan and http://www.sse.gov.on.ca/medt/investinontario/en/Pages/communities_majoremployers.aspx?mun_name=3549060&topic=2

5 Transportation Facilities

5.1 Highways

Major arterial highways serving the region:

- Highway 11 runs north to south and links Powassan north to North Bay, and south to Trout Creek and Huntsville.
- Highway 17 is 30 minutes north on Highway 11, connects North Bay, east to Mattawa and through to Ottawa and west to Sudbury and all points west.
- Highway 60 (Algonquin Park) is 78 kms south of Powassan, off Highway 11.
- Highway 522 is off Highway 11, connects Trout Creek to Highway 69.
- Highway 534 connects Powassan to Nipissing and Restoule, off Highway 11.
- The nearest four lane highway is Highway 400. It is approximately 116 kms from Powassan, and runs northwest to southeast into Toronto.

Table 20: Distance to Urban Centres

Distance to Major Urban Centres		
	Km	Miles
Alliston	258	160
Hamilton	360	223
Ingersoll	434	269
Kingston	483	300
Kitchener/Waterloo	382	237
London	470	292
Montreal	724	449
North Bay	30	18
Ottawa	371	230
St. Catharines	404	251
Sault Ste. Marie	467	290
Thunder Bay	1157	718
Toronto	325	201
Windsor	645	400

Source: McSweeney & Associates from

http://www.sse.gov.on.ca/medt/investinontario/en/Pages/communities_transportation.aspx?mun_name=3549060&topic=6

Table 21: Distance to Major US Border Crossings

Distance to Border Crossings		
	Km	Miles
Massena/Cornwall	469	291
Ogdensburg/Prescott	435	270
Alexandria Bay/Ivy Lea	491	305
Lewiston/Queenston	421	261
Niagara Falls/Niagara Falls	424	263
Buffalo/Fort Erie	445	276
Detroit/Windsor	645	400
Port Huron/Sarnia	568	352
Sault Ste. Marie/Sault Ste. Marie	467	290
Grand Portage/Thunder Bay	1157	718
International Falls/Fort Frances	1387	861
Baudette/Rainy River	1475	916

Source: McSweeney & Associates from

http://www.sse.gov.on.ca/medt/investinontario/en/Pages/communities_transportation.aspx?mun_name=3549060&topic=6

5.2 Rail Service

Ontario Northland

555 Oak Street East

North Bay, ON

P1B 8L3

Phone: 705-472-4500 or 1-800-363.7512 x0

Fax: 705-476-5598

Email: info@ontarionorthland.ca

Web: www.ontarionorthland.ca/en/contact/contact.html

System map: www.ontarionorthland.ca/en/railfreight/systemmap.html

North Bay Station

100 Station Road

North Bay, ON

P1B 8G4

Phone: 705-495-4200

Fax: 705-495-4650

Hours of Operation

Daily: 24 hours

Web: <http://www.ontarionorthland.ca/en/agencies/NORT1.HTM>

Ontario Northland is primarily engaged in providing rail freight services for the transportation of mineral and forest products, chemicals, petroleum and other products to and from northeastern Ontario and northwestern Quebec. In addition to rail freight, Ontario Northland operates express freight services between Cochrane and Moosonee. Ontario Northland is part of a North American network of railways providing freight services to and from locations throughout North America, including import/export traffic from seaports. Special train movements for heavy or dimensional loads are also handled by Ontario Northland. Most carload freight shipments are moved on regularly scheduled freight trains connecting with other Canadian railways: Canadian National (CN) and CP Rail System (CPRS).

Ottawa Valley Railway

The OVR operates 342 miles of track between Coniston to Smith Falls, Ontario with a Class I interchange with the Canadian Pacific at Sudbury and Smiths Falls, Ontario.

The OVR moves commodities including intermodal, forest products, and chemicals with approximately 70,000 cars per year. Ottawa Valley Railway links to CN and Ontario Northland at North Bay.

Ottawa Valley Railway

445 Oak Street East

North Bay, ON

P1B 1A3

General Manager: Scott Campbell

Business Phone: 705-472-6200 x243

Web: <http://www.railamerica.com/RailServices/OVR.aspx>

CN Rail

CN is a leader in the North American rail industry. Following its acquisition of Illinois Central in 1999, WC in 2001 and GLT in 2004, as well as its partnership agreement with BC Rail in 2004, CN provides shippers with more options and greater reach in the rapidly expanding market for north-south trade.

Headquarters:
935 de La Gauchetière Street West
Montreal, QC
H3B 2M9
Phone: 1-888-888-5909
Web: <http://www.cn.ca/en/index.htm>

Intermodal Terminals:

The nearest intermodal terminal is located in Toronto.
Airport Road & Intermodal Drive
76 Intermodal Drive
Brampton, ON
L6T 5K1
Web: www.cn.ca/en/shipping-how-intermodal-terminals.htm

5.3 Airports

North Bay Jack Garland Airport (Domestic Airport)

50 Terminal St., Suite 1
North Bay, ON
Canada P1B 8G2
Phone: 705-474-3020
Fax: 705-472-9867
Email: <mailto:AirportManager@northbayairport.com>
Web: <http://www.northbayairport.com/main.asp>

Just minutes from the downtown core, the municipally-owned North Bay Jack Garland Airport is served by several air carriers and charter operators with daily flights to Toronto and Ottawa. This provides national and international connector service for North Bay and other Northern Ontario communities. North Bay's Jack Garland Airport is an ideal location for aerospace testing and evaluation programs. It offers:

- runways that can accommodate all aircraft types; the main one is 10,000' followed by a second runway at 4,500' and a third which is a dedicated Flight- and Ground-Test Runway 13/31;
- operational schedules that can accommodate intensive periods of runway use;
- ample ground facilities;
- weather conditions that (seasonally) can be representative of almost any airport in the world;
- reserved Flight-test airspace.

South River – Sundridge District Airport

521 Airport Road, P.O. Box 310
South River, Ontario
Phone: 705-386-2710
Email: <mailto:info@flyalmaguin.com>

Powassan Community Profile 2013

Web: <http://www.sundridge.ca/SouthRiverSundridgeAirport.htm>

Distance from Powassan: 30 minutes

Located in the heart of the Almaguin Highlands near South River and Sundridge, the airport is located just off Highway 11 near the west entrance to Algonquin Park, and falls within the Parry Sound District.

Toronto Pearson International Airport (International Airport)

Greater Toronto Airports Authority

Toronto Pearson International Airport

PO Box 6031, 3111 Convair Drive

Toronto AMF, ON

L5P 1B2

Phone: 416-776-9892

Web: www.gtaa.com/en/travellers/airport_information/

Toronto Pearson International Airport, also known as Lester B. Pearson International Airport or simply Toronto Pearson (IATA: YYZ, ICAO: CYYZ), is a major international airport serving Toronto, Ontario, Canada, situated 27 km (17 mi) northwest of Downtown Toronto in the city of Mississauga. It is the busiest airport in Canada and the primary hub of flag carrier Air Canada and is also a hub for Air Canada Jazz, WestJet, Air Transat, Sunwing Airlines, and Skyservice. The airport is operated by Greater Toronto Airports Authority as part of Transport Canada's National Airports System. It is one of eight Canadian airports with facilities for United States border preclearance. It has 5 runways and with the longest runway being 11,120 feet.

5.4 Port

Parry Sound Harbour (Nearest Local Port)

Town Of Parry Sound

52 Seguin St.

Parry Sound, ON P2A 1B4

Canada

Phone: 705-746-2101

Fax: 705-746-7461

Web: <http://www.townofparrysound.com/>

Port of Toronto (Ocean Port)

The Toronto Port Authority

60 Harbour Street

Toronto, ON M5J 1B7

Canada

Phone: 416-863-2000

Fax: 416-863-4830

Email: info@torontoport.com

Web: <http://www.torontoport.com/index.asp>

The Port of Toronto, adjacent to Canada's largest business, industrial, and cultural centre has the perfect port profile. With over 50 acres of paved marshalling area, we offer all the services you need from long/short-term storage to Canada customs-bonded heated warehousing. The Port of Toronto provides immediate access to marine routes, major highways and rail facilities, serving as a transportation hub for a much wider market, including all of Ontario, Northwestern Quebec, Midwest Canada and Northeastern U.S.A.

5.5 Bus

Greyhound Lines Canada

Greyhound Canada Transportation Corp.

877 Greyhound Way SW

Calgary, AB T3C 3V8

Phone: 1-800-661-TRIP (8747)

Greyhound Canada is the largest provider of intercity bus transportation in Canada, serving nearly 1,100 locations. It has become an icon of bus travel, providing safe, enjoyable and affordable travel to 6.5 million passengers each year. Greyhound has interline partnerships with a number of independent bus lines across Canada. These bus companies provide complementary service to Greyhound Canada's existing schedules and link to many of the smaller towns in Greyhound Canada's national route system.

Bus Parcel Express - Ontario Northland Transportation Commission

O.N.T.C. Terminal

100 Station Road

North Bay, ON P1B 8G4

Phone: 705-495-4200

Fax: 705-495-4650

Web: <http://www.ontarionorthland.ca/en/agencies/NORT1.HTM>

Stevann's Video - Powassan Bus Stop

595 Main St. South

Powassan, ON P0H 1Z0

Phone: 705-724-2564

Web: <http://www.greyhound.ca/home/en/location/AgencyInformation.aspx?city=125260>

Or <http://www.ontarionorthland.ca/en/agencies/POWAS.HTM>

Greyhound and Bus Parcel Express are all available in this bus stop.

For Greyhound: tickets are not sold at this location in Powassan, ON. Greyhound tickets can be obtained by mail at least 10 mailing days in advance for trips departing from Powassan. Tickets by mail may be purchased through Ticket Center on Greyhound.ca or by calling our Passenger Sales Centre at 1-800-661-8747. For trips that don't meet the mailing deadline, tickets can be purchased from any Greyhound-affiliated terminal. Check for other locations or call Passenger Sales Centre at 1-800-661-8747 to find a nearby location.

6 Taxes and Utilities

6.1 Local Property Tax Rates

Table 22: Local Property Tax Rates, 2010

Property Class	Total Tax Rates
Residential/Farm	0.01313081
Multi-Residential	0.02910572
Commercial Occupied	0.02517917
Commercial Vacant Units	0.01762542
Commercial Vacant Land	0.01762542
Industrial Occupied	0.03048944
Industrial Vacant Units	0.01981814
Large Industrial	0.03678446
Large Industrial-vacant	0.0239099
Pipelines	0.0207233
Farmland	0.0032827
Managed Forests	0.0032827

Source: Municipality of Powassan

Powassan Community Profile 2013

6.2 Federal and Provincial Income Tax Rates

Table 23: Corporate Taxes – Non-Canadian Controlled¹⁴

Corporate Tax Rates – Non-Canadian Controlled	2012	2013
Combined Federal and Provincial	%	%
General/Manufacturing and Processing/Investment	25	25
General; Active Business Income	26.5	26.5
Investment Income	26.5	26.5

Source: <http://www.kpmg.com/Ca/en/IssuesAndInsights/ArticlesPublications/Pages/taxrates.aspx>

Table 24: Corporate Taxes – Canadian Controlled¹⁵

Corporate Tax Rates - Canadian Controlled	2012	2013
Combined Federal and Provincial	%	%
General/Manufacturing and Processing/Investment	15.5	15.5
General; Active Business Income	26.5	26.5
Investment Income	46.2	46.2

Source <http://www.kpmg.com/Ca/en/IssuesAndInsights/ArticlesPublications/Pages/taxrates.aspx>

Table 25: Ontario's Capital Tax Elimination Plan

Date	Deduction (\$M)	*M&P and Resources	Regular Corporations	First \$400M of Taxable Capital	Taxable Capital above \$400M	
					Non-Deposit Taking	Deposit Taking
		Eliminated				
4-Jan-09	15		0.225	0.45	0.54	0.675
5-Jan-10	15		0.15	0.3	0.36	0.45
1-Jul-10	Eliminated					

Source: <http://www.kpmg.ca/en/services/tax/taxrates.html> and <http://www.fin.gov.on.ca/english/budget/ontariobudgets/2008/chpt3.html>

¹⁴ Ontario's 2009 budget proposes to decrease the general corporate income tax rate from 14% to 12%, effective July 1, 2010 and will continue to decrease this rate each July 1 thereafter until it reaches 10% on July 1, 2013. The rate will decrease as follows: to 11.5% in 2011, to 11% in 2012 and to 10% in 2013.

The province's 2009 budget also proposes to decrease the M&P income tax rate from 12% to 10%, effective July 1, 2010.

¹⁵ Ontario's 2009 budget proposes to decrease the general corporate income tax rate from 14% to 12%, effective July 1, 2010 and will continue to decrease this rate each July 1, thereafter until it reaches 10% on July 1, 2013. The rate will decrease as follows: to 11.5% in 2011, to 11% in 2012 and to 10% in 2013.

The province's 2009 budget also proposes to decrease the small business income tax rate from 5.5% to 4.5% effective July 1, 2010. Ontario levies a surtax at a rate of 4.25% on CCPCs claiming the Ontario small business deduction in order to gradually reduce the benefit of the deduction where taxable income exceeds the small business income threshold. Based on the small business limit of \$500,000 the phase-put range for the application of the surtax is between \$500,000 and \$1.5 million. The province's 2009 budget proposes to eliminate this small business deduction surtax, effective July 1, 2010.

Powassan Community Profile 2013

Table 26: Personal Income Tax, 2013

Taxable Income (\$CDN)	2013 Marginal Tax Rates			
	Marginal Rate	Capital Gains	Canadian Dividends	
			Eligible Dividends	Small Business Dividends
first \$39,720	20.05%	10.03%	-1.89%	2.77%
over \$39,723 up to \$43,561	24.15%	12.08%	3.77%	7.90%
over \$43,561 up to \$69,963	31.15%	15.58%	13.43%	16.65%
over \$69,963 up to \$79,448	32.98%	16.49%	14.19%	17.81%
over \$79,448 up to \$82,422	35.39%	17.70%	17.52%	20.82%
over \$82,422 up to \$87,123	39.41%	19.70%	19.88%	23.82%
over \$87,123 up to \$135,054	43.41%	21.70%	25.40%	28.82%
over \$135,054 up to \$509,000	46.41%	23.20%	26.57%	32.57%
Over \$509,000	49.53%	24.76%	33.85%	36.47%

Source: <http://www.taxtips.ca/taxrates/on.htm>

Table 27: Sales Tax

Sales Tax	2010 (Jan. to June)	After July 1, 2010
GST (goods and services tax)	5%	
PST (provincial sale tax or retail sales tax)	8%	
HST (harmonized sales tax)		13%

Source: <http://www.cra-arc.gc.ca/tx/bsnss/tpcs/gst-tps/rts-eng.html>

Powassan Community Profile 2013

6.3 Electricity

Service Provider: Hydro One

Phone: 1-888-664-1122

Web: www.hydroone.com

Table 28: Hydro One Residential Electricity Rates

Electricity rates effective Nov. 1, 2012	Urban Density	High Density	Normal Density
1. Electricity:			
Time of Use Prices			
Off-Peak	6.3¢	6.3¢	6.3¢
Mid-Peak	9.9¢	6.3¢	6.3¢
On-Peak	6.3¢	6.3¢	6.3¢
RPP Tiered Prices			
First 1,000 kWh per month (adjusted usage - ¢/kWh)	7.4¢	7.4¢	7.4¢
Additional kWh(adjusted usage - ¢/kWh)	8.7¢	8.7¢	8.7¢
2. Delivery:			
Fixed charge (\$/month)	\$16.60	\$23.85	\$32.40†
Volume charge (metered usage - ¢/kWh)*	2.528¢	3.371¢	3.756¢
Transmission connection charge (adjusted usage - ¢/kWh)	0.696¢	0.707¢	0.690¢
Transmission network charge (adjusted usage - ¢/kWh)	0.500¢	0.509¢	0.480¢
3. Regulatory charges:			
Fixed charge (\$/month)	\$0.25*	\$0.25*	\$0.25*
Rural rate protection charge (adjusted usage - ¢/kWh)	0.11¢	0.11¢	0.11¢
Wholesale market service rate (adjusted usage - ¢/kWh)	0.52¢	0.52¢	0.52¢
4. Debt Retirement charge (metered usage - ¢/kWh):	0.70¢	0.70¢	0.70¢
5. Adjustment Factor	1.078	1.085	1.092
* If you've enrolled with a retailer, the \$0.25 standard supply service administration charge will be deducted from the Regulatory charges on your bill.			
** Communities of Bancroft, Campbellford and Eganville have their own specific rates for the Debt Retirement Charge. They are as follows: Bancroft = 0.66¢ per kWh; Campbellford = 0.49¢ per kWh; and Eganville = 0.60¢ per kWh.			
† Under the Ontario Energy Board Act, and associated regulation, qualifying year-round residences are eligible to receive Rural or Remote Rate Protection (RRRP). The Delivery charge for Residential - Low Density includes the applicable credit of \$28.50.			

Source: Hydro One Networks, <http://www.hydroone.com/RegulatoryAffairs/RatesPrices/Pages/ResidentialDeliveryRates.aspx>

Powassan Community Profile 2013

Table 29: Hydro One Small Business Electricity Rates (Less than 50 kW per month)

Electricity rates effective Nov. 1, 2012	General Service Urban Energy	General Service Energy
1. Electricity:		
Time of Use Prices		
Off-Peak	6.3¢	6.3¢
Mid-Peak	9.9¢	9.9¢
On-Peak	11.8¢	11.8¢
RPP Tiered Prices		
First 750 kWh per month (adjusted usage - ¢/kWh)	7.4¢	7.4¢
Additional kWh (adjusted usage - ¢/kWh)	8.7¢	8.7¢
2. Delivery*:		
Fixed charge (\$/month)	\$14.01	\$39.79
Distribution volume charge (metered usage - ¢/kWh)	1.614¢	4.001¢
Transmission connection charge (adjusted usage - ¢/kWh)	0.525¢	0.518¢
Transmission network charge (adjusted usage - ¢/kWh)	0.366¢	0.358¢
3. Regulatory charges:		
Fixed charge (\$/month)	\$0.25*	\$0.25*
Rural rate protection charge (adjusted usage - ¢/kWh)	0.11¢	0.11¢
Wholesale market service rate (adjusted usage - ¢/kWh)	0.52¢	0.52¢
4. Debt retirement charge (metered usage - ¢/kWh)**	0.70¢	0.70¢
* If you've enrolled with a retailer, the \$0.25 standard supply service administration charge will be deducted from the Regulatory charges on your bill.		
** Communities of Bancroft, Campbellford and Eganville have their own specific rates for the Debt Retirement Charge. They are as follows: Bancroft = 0.66¢ per kWh; Campbellford = 0.49¢ per kWh; and Eganville = 0.60¢ per kWh.		

Source: Hydro One Networks,

<http://www.hydroone.com/RegulatoryAffairs/RatesPrices/Pages/SmallBusinessDeliveryRates.aspx#kwhkw>.

Table 30: Hydro One Small Business Electricity Rates (More than 50 kW per month)

Electricity rates effective Nov. 1, 2012	General Service Urban Energy	General Service Energy
1. Electricity:		
Time of Use Prices		
Off-Peak	6.3¢	6.3¢
Mid-Peak	9.9¢	9.9¢
On-Peak	11.8¢	11.8¢
RPP Tiered Prices		
First 750 kWh per month (adjusted usage - ¢/kWh)	7.4¢	7.4¢
Additional kWh (adjusted usage - ¢/kWh)	8.7¢	8.7¢
1. Electricity – over 250,000 kWh/year with a conventional meter (¢/kWh)	Weighted average spot market price or retailer contract	Weighted average spot market price or retailer contract
1. Electricity – over 250,000 kWh/year with an interval meter (¢/kWh)	spot market price or retailer contract	spot market price or retailer contract

Powassan Community Profile 2013

2. Delivery*:		
Fixed charge (\$/month)	\$32.32	\$55.62
Distribution volume charge (metered usage - \$/kW)	6.720	11.724
Transmission connection charge (adjusted usage - \$/kW)	1.86***	1.78***
Transmission network charge (adjusted usage - \$/kW)	1.26***	1.21***
3. Regulatory charges:		
Fixed charge (\$/month)	\$0.25*	\$0.25*
Rural rate protection charge (adjusted usage - ¢/kWh)	0.11¢	0.11¢
Wholesale market service rate (adjusted usage - ¢/kWh)	0.52¢	0.52¢
4. Debt retirement charge (metered usage - ¢/kWh)**	0.70¢	0.70¢
<p>* If you've enrolled with a retailer, the \$0.25 standard supply service administration charge will be deducted from the Regulatory charges on your bill.</p> <p>** Communities of Bancroft, Campbellford and Eganville have their own specific rates for the Debt Retirement Charge. They are as follows: Bancroft = 0.66¢ per kWh; Campbellford = 0.49¢ per kWh; and Eganville = 0.60¢ per kWh.</p> <p>*** Retail transmission rates shown have been adjusted for line losses.</p>		

Source: Hydro One Networks, <http://www.hydroone.com/RegulatoryAffairs/RatesPrices/Pages/SmallBusinessDeliveryRates.aspx>

6.4 Natural Gas

Service Provider: Union Gas

Phone: 1-877-969-0999

Web: www.uniongas.com

Union Gas Limited is a major Canadian natural gas utility that provides energy delivery and related services to about 1.3 million residential, commercial and industrial customers in over 400 communities in northern, southwestern and eastern Ontario. Union Gas has assets of approximately \$4 billion and employs about 2,200 people. Union Gas is a Spectra Energy Company.

Union Gas distribution service area extends throughout northern Ontario from the Manitoba border to the North Bay/Muskoka area, through southwestern Ontario from Windsor to just west of Toronto, and across eastern Ontario from Port Hope to Cornwall. Union Gas also provides natural gas storage and transportation services for other utilities and energy market participants in Ontario, Quebec and the United States. Union Gas' storage and transmission system forms an important link in the movement of natural gas from Western Canadian and U.S. supply basins to central Canadian and Northeast U.S. markets.

Table 31: Union Gas - Regional Residential Rates (Rate 301)

Monthly Demand Charge	Rates as of Jan. 1, 2013
Gas commodity rate (cents/m3)	12.8230
Gas Commodity Price Adjustment (cents/m3)	-2.1736
Transportation (cents/m3)	7.6495
Transportation Price Adjustment (cents/m3)	1.1131
Storage (cents/m3)	2.2540

Powassan Community Profile 2013

Storage Price Adjustment (cents/m3)	0.0000
Delivery (cents per m3)	
First 100 m ³	7.5664
Next 200 m ³	7.0559
Next 200 m ³	6.6932
Next 500 m ³	6.3604
All over Previous Block	6.0855
Delivery Price Adjustment	-0.0578
Monthly charge (per metre)	\$21.00

Source: <http://www.uniongas.com/aboutus/rates/residential/pdf/rate301.pdf>

Table 32: Union Gas - Small Commercial Rates (Rate 310)

Monthly Demand Charge	Rates as of Jan. 1, 2013
Gas commodity rate (cents/m3)	12.8230
Gas Commodity Price Adjustment (cents/m3)	-2.1736
Transportation (cents/m3)	7.2153
Transportation Price Adjustment (cents/m3)	1.1127
Storage (cents/m3)	1.5796
Storage Price Adjustment (cents/m3)	0.0000
Monthly Delivery Commodity Charge (cents per m3)	
First 1,000 m ³	6.0731
Next 9,000 m ³	4.8064
Next 20,000 m ³	4.0839
Next 70,000 m ³	3.6215
Over 100,000 m ³	1.8694
Delivery Price Adjustment	-0.0540
Monthly Charge (per metre)	\$70.00

Source: <http://www.uniongas.com/aboutus/rates/residential/pdf/rate310.pdf>

For large business rates services, please check website:
www.uniongas.com/largebusiness/rateservices

6.5 Waste Management

The Municipality offers garbage and recycling collection to all residences and businesses within the Municipality.

Garbage Collection

Collected weekly, with a two (2) bag limit per household. Additional bag tags are available at the Municipal Office for \$1 each. Businesses have a six (6) bag limit but can make arrangements with the Municipality for additional pickups.

Recycling Collection

Collected bi-weekly, with no limitations for residential collection. Businesses can arrange additional pickups with the recycling contractor.

Hazardous Materials and Electronic Waste

This includes computers, monitors, cell phones etc. which can be deposited at the North Bay Household Hazardous Waste Depot, 112 Patton Street, off Seymour Street, under an agreement between the Municipality of Powassan and the City of North Bay.

Powassan Community Profile 2013

Table 33: Waste Disposal Site

70 Proudfoot Road Landfill Site	
Working Hours	Monday, Wednesday, Friday and Saturday 8:00 am to 12:00 noon
Tipping Fees	<p><u>Fees set for Large/Commercial Dumping</u></p> <p>Tandem Truck (12 yds): \$84.00 Triaxle Truck (15 yds): \$105.00 Commercial Size Trailer: \$21.00 (Typical large construction trailer) 20 cubic yards of wood or steel (\$7.00/yard cu): \$140.00 Pickup truck or trailer – full load (2yds): \$14.00 – Half load (1 yd): \$7.00 Normal Garbage Bag: \$1.00</p> <p><u>Fees for Scrap Metal Items</u></p> <p>Large appliances (fridge, stove): \$10.00 Medium appliances (water tanks etc.): \$8.00 Small metal items (rims, scrap metal): \$6.00 Untagged appliances: \$35.00 **As of June 1, 1994 all appliances with Freon used in them must be certified as having the Freon removed and be so labelled by a qualified person. If they are not certified there will be an additional fee.</p> <p><u>Fees set for tires</u></p> <p>Large tractor/Loader tires: \$20.00 Large truck tires: \$10.00 Light truck tires C/W rims: \$8.00 Light truck tires: \$3.00 Passenger car tires C/W rims: \$6.00 Passenger car tires: \$3.00 Replacement Landfill Card: \$5.00</p> <p><u>Lift Charges</u></p> <p>Commercial pick up: \$5.00+\$7.00/yard</p>

Source: Municipality of Powassan, <http://www.powassan.net/pagesmith/12>

6.6 Water and Sanitary Sewer

The urban area of Powassan is serviced with water and sewer. There are approximately 450 households and businesses connected. The Municipality is currently installing water meters to all residences and businesses connected to the system and a new user - payment structure to be introduced in early 2011. A new \$2 million water reservoir was completed in the spring of 2009 which improved the distribution and pressure of the water service. Options are being considered for new infrastructure requirements for the municipal sewage system and lagoons. Current water and sewage rates are listed in By-law 2010-09 as follows:

1. The water usage rate shall be charged as follows:
 - Commercial establishments and non-residential units, which are not required to be metered, shall be charged on the same basis as residential dwellings that being basic charge for six rooms, additional charge for additional rooms, offices, etc., plus additional charges for taps.
 - Each Unit - Six rooms and under (one cold tap and one hot tap included): \$153.62
 - Each additional room (Rooms to be included in dwellings - Kitchen, dining room, living room, family room, bedrooms): \$44.51
 - One of any of following - bathtub, shower, wash basin, laundry tub, automatic washer, spin washer, basement tap (other than laundry facility), automatic dishwasher including portables, outside tap, jet fountain standpipes for fire protection only with one nozzle, and commercial ice makers: \$ 67.81 Each additional device: \$ 23.08
 - One of the following - toilet, urinal, and boiler for hot water or steam heating: \$87.79 Each additional device: \$33.88
2. The minimum annual water usage rate shall be charged as follows and apply to all types of rates (Residential and commercial): \$445.03
3. The water usage rate for all existing (as of January 1, 2010) metered properties shall be as follows:
 - For each 100 cubic feet of water, the quantity supplied does not exceed 2,000 cubic feet, per quarter: \$4.72
 - Or for each 1,000 gallons of water, the quantity supplied does not exceed 12,500 gallons, per quarter: \$6.92
 - Or for each additional 100 cubic feet: \$4.06
 - Or for each additional 1,000 gallons: \$5.96
4. The following collection provisions shall apply:
 - The Treasurer, not later than 21 days prior to the date that the water and sewage payment is due, shall mail or cause to be mailed the notice of water and sewer due to the address of the residence or owner or place of business of the person to whom such notice is required to be given.
 - The late penalty charge applicable to accounts unpaid by the said due date shall be ten percent (10.0 %) of the water and sewage account total.
5. Water and sewer shall be payable to the Corporation of the Municipality of Powassan and may be paid at the Municipal Office or through a participating banking facility internet or telebanking.
6. Any fees charged by the said banks shall be paid by the ratepayer.
7. All water and sewer accounts shall be billed in the name of the owner of the dwelling regardless of occupancy.
8. Unpaid water and sewer accounts shall be added to the Collector=s Roll as per Section 398(2) of the Municipal Act 2001, (S.O. 2001, c. 25), and treated as taxes until such time as they are paid.

Powassan Community Profile 2013

9. A sewage processing rate is hereby imposed upon the owners of lands who use sewage works in the Municipality of Powassan.
10. The sewage processing rate shall be charged at .6554 times the water rate established by the Municipality of Powassan.
11. The minimum sewage processing rate shall be charged as follows and apply to all types of rates (residential and commercial): \$291.67 per annum

Table 34: Water and Sewer

New Water Rates	
Minimum Charge per Month (\$)	37.08
Effective Date	Jan. 2011
Water Treatment Facilities	
Rated Capacity (m3/day)	1313
Daily Consumption (m3/day)	475

Source: http://www.sse.gov.on.ca/medt/investinontario/en/Pages/communities_utilities.aspx?mun_name=3549060&topic=1

Contact the municipality at 705-724-2813 for information on which municipal services are available to specific properties.

Powassan Community Profile 2013

6.7 Communications Infrastructure

Table 35: Communications Infrastructure

Service	Company Name
Cell Phone Providers	Bell Canada
	Rogers
	Telus
Internet Providers	Vianet
	Net Spectrum
	Ontera
	Bell Canada
Cable/Satellite TV Providers	E-Link based out of Sudbury
	Bell Canada
	Shaw

Source: Municipality of Powassan

Rogers Wireless

100 Westmorland Street
 Moncton, NB E1C 0G1
 Phone: 1-888-764-3771
 Web:

www.rogers.com/web/Rogers.portal?cm_mmc_o=mH4j7BBTkWCjC2By5jPyzEpjviviNi9jwECjCqBTwylCjCyBTwyl

Bell Canada

Customer Service Centre
 P.O. Box 920 Station A
 Toronto, ON M5W 1G5
 Phone: your area code + 310-2355
 Toll Free: 1-800-667-0123
 Web: www.bell.ca

Bell Canada provides local and long distance phone service, wireless voice and data services, internet access, satellite television, and a host of other solutions and services to Canadian homes and businesses.

Net Spectrum

505 Froot Road, Second Floor
 Sudbury, Ontario P3C 5A2
 Toll Free: 1-800-461-6379
 Phone: 705-673-6661
 Fax: 705-673-0957
 Email: <mailto:service@netspectrum.ca>
 Web: <http://www.netspectrum.ca/>

NET SPECTRUM is the fixed wireless broadband division of Spectrum 2000 Communications Group Inc. o/a Spectrum Group. SPECTRUM GROUP is a “Wireless Solutions” Company that integrates many communication technologies and products to satisfy remote and mobile voice, data and video requirements.

Powassan Community Profile 2013

Ontera

555 Oak Street East
North Bay, ON P1B 8L3
Phone: 1-888-5-ontera
Fax: 705-495-2025
Email: customer.service@ontera.ca
Web: www.ontera.ca

For all inquiries including signing up for internet services, telephone, long distance plans, data and cellular please call: 1-888-5-ONTERA (1-888-566-8372). Email inquiries including information, new account set up, existing service changes can be sent to customer.service@ontera.ca.

Ontera is a wholly owned subsidiary of the Ontario Northland Transportation Commission (ONTC), an Operational Enterprise of the Province of Ontario. ONTC, established in 1902, strives to be a recognized leader in creating prosperity in the North by providing innovative, competitive transportation and telecommunications solutions.

Ontera is a fully integrated telecommunication company, offering a wide range of telecommunications and IP-based solutions, including Internet, long distance, local voice, data and information technology services throughout Northern Ontario.

Ontera Telecom Services:

- IQFL digital switching (DMS-10) over fibre transport to the DMS-200
- DMS-10 can provide standard features (call waiting, display, call forwarding etc.)
- CCS-7 service in digital facilities in IQFL over fibre and Gbic bandwidth capability
- DSL on line.
- T1 capacity each T1 having 24 channels.

Eastlink

General Inquiries
P.O. Box 8660, Station "A"
Halifax, NS B3K 5M3
Phone: 1-888-345-1111
Web: www.eastlink.ca/central/index.asp

EastLink is a Canadian owned and operated company delivering world-class telecommunication and entertainment services to residential, business and public sector customers throughout Canada. EastLink got its start in Amherst, NS, in 1970 when it was issued one of the first cable licences granted by the CRTC. Today it is the largest privately owned cable company in Canada, with customers in all 10 provinces. Through a series of strategic acquisitions, EastLink is the fifth-largest cable television provider in Canada, with over 1,500 employees working in offices across the country

Vianet Internet Solutions

128 Larch Street, Suite 301
Sudbury, ON P3E 5J8
Phone: 705-675-0400
Fax: 705-675-0404
Web: <http://www.vianet.ca/index.php>

Powassan Community Profile 2013

Vianet offers a wide variety of options and solutions to meet all of your business Internet needs. Each business situation is carefully evaluated to provide the appropriate service in a cost effective manner. Vianet has the technical expertise and experience to provide reliable solutions to the telecommunications and technology needs of businesses of any size, from home offices to large corporations. Vianet is among a select group of Canadian companies allowed to offer competitive local phone service. vTone delivers reliable phone service over a broadband Internet connection instead of regular copper lines.

Telus

Telus Mobility Client Care
200 Consilium Place, Suite 1600
Scarborough, ON M1H 3J3
Phone: 1-866-558-2273
Web: www.telusmobility.com/en/ON/home/index.shtml

Shaw

Phone: 1-888-472-2222
Web: <http://www.shaw.ca/en-ca/>

Shaw has experienced rapid and successful growth within the cable, satellite and telecommunications industries over the last several decades. With this growth, Shaw has created and acquired a number of companies focused on delivering high-quality products and services to approximately 3.0 million customers in Canada.

Shaw companies include:

- Shaw Communications Inc.
- Shaw Cablesystems G.P.
- Shaw Direct
- Shaw Tracking
- Shaw Broadcast Services
- Shaw Business Solutions

Shaw Direct - Star Choice

Star Choice Communications
Suite 100, 2400 32 Avenue NE
Calgary, AB T2E 9A7
Phone: 1-866-782-7932
Fax: 1-800-872-8219
Web: www.shawdirect.ca/english/default.asp

Shaw Direct, formerly Star Choice Communications, is a leading provider of digital direct-to-home (DTH) satellite television in Canada. Shaw Direct provides 100% digital picture and Dolby surround sound audio capability to over 840,000 customers across the country.

Powassan Community Profile 2013

7 Building and Development Related Fees

7.1 Development Related Fees

Table 36: Development-related Application Fees*

Application	Fee Amount	
Based on Square Footage		
	Footage	\$/Footage
Single Storey Home	0-1,000	\$0.70
	1,000-1,500	\$0.50
	1,500+	\$0.35
Second Storey	0-1,500	\$0.40
	1,500+	\$0.20
Accessory Building (Garages, decks, porch, carport)	0-5,000	\$0.15
	5,000+	\$0.07
Sunrooms/Solariums	0-3,000	\$0.35
	3,000+	\$0.18
Farm Buildings (On assessed farmland)	0-5,000	\$0.18
	5,000+	\$0.09
Commercial Buildings (Offices, restaurants, showrooms)	0-1,000	\$0.87
	1,000+	\$0.45
Commercial Accessory	0-4,000	\$0.20
	4,000+	0.1
Based on Flat Rate		
Renovations/Demolition		
(a) Part 9		\$50
(b) Part 3		\$150
Miscellaneous		
Temporary building		\$75
Wood stoves and chimney		\$30
Swimming pools		\$180
Plumbing Fixtures (up to 10)		\$6.00 per fixture
Plumbing Fixtures exceeding 10		\$2.00 per fixture
Other Building Procedures		
Revised and Renewals		\$50
Outstanding Work Order		\$50
Certificate of Compliance		\$50
Entrance Permits		\$50
911 Signs		\$50
Refund on Building Fees	Building Permits that are withdrawn or abandoned may be refunded as follows: <ul style="list-style-type: none"> • 80% if administration functions only have been performed • 70% if administration and zoning functions only have performed • 45% if administration and zoning and plans examination functions only have been performed 	

Powassan Community Profile 2013

Application	Fee Amount
	<ul style="list-style-type: none">• 35% if the permit has been issued and no field inspections have been performed• 5% shall additionally be deducted for each field inspection that has been performed after the permit has been issued.• No refund shall be made:<ol style="list-style-type: none">1. Of an amount that is less than \$50.002. After one year from the date the permit is issued.
*Base Fee of \$50.00 for all permits.	

Source: Municipality of Powassan

A building permit is issued between 5-10 business days. It is dependent upon having all the required information submitted when making the application. For further information, please contact:

Kimberly Bester-Melanson
The Municipality of Powassan
466 Main Street, PO Box 250
Powassan, ON
POH 1Z0
Canada
Phone: 705-724-2813
Fax: 705-724-5533
Email: Kbester-Melanson@powassan.net
Web: www.Powassan.net

7.2 Development Charges

There are no development charges.

Powassan Community Profile 2013

8 Industrial Parks

8.1 Industrial Parks

Powassan has two industrial parks, one in Powassan and one in Trout Creek. Both have good access to Highway 11. Private sanitary sewer and water services are available, as is hydro.

Table 37: Industrial Parks Available

Industrial Parks Available							
Name of the Park	Size (Total Acres Available)	Price (\$/acre)		Rail Access	Serviced	Ownership	Owner Will Subdivide?
North Business Park	21.24	N/A	N/A	No	No	Private	Yes
South Business Park	10.17	N/A	N/A	No	No	Private/Public	Yes

Source: http://www.sse.gov.on.ca/medt/investinontario/en/Pages/communities_realestate.aspx?mun_name=3549060&topic=3

9 Powassan Land Inventory

Table 38: Industrial Land

Geographic Area	Industrial						
	Landbase			Vacancy			
	Total Acres (ac)	Serviced (ac)	Unserviced (ac)	Serviced Vacant (ac)	Unserviced Vacant (ac)	Serviced Vacant%	Unserviced Vacant %
Powassan	653.43	274.27	379.16	12.67	86.58	4.62%	22.83%
Trout Creek	157.16	134.90	22.26	0.00	5.97	0.00%	26.82%
Total	810.59	409.17	401.42	12.67	92.55	3.10%	23.06%

Source: Municipality of Powassan

Table 39: Commercial Land

Geographic Area	Commercial						
	Landbase			Vacancy			
	Total Acres	Serviced (ac)	Unserviced (ac)	Serviced Vacant (ac)	Unserviced Vacant (ac)	Serviced Vacant%	Unserviced Vacant %
Powassan	248.85	122.13	126.72	0.70	51.13	0.57%	40.35%
Trout Creek	131.39	11.00	120.39	0.30	10.27	2.73%	8.53%
Total	380.24	133.13	247.11	1.00	61.40	0.75%	24.85%

Source: Municipality of Powassan

For further information or development opportunities, please contact:

Kimberly Bester-Melanson
 The Municipality of Powassan
 466 Main Street, PO Box 250
 Powassan, ON
 P0H 1Z0
 Canada
 Phone: 705-724-2813
 Fax: 705-724-5533
 Email: Kbester-Melanson@powassan.net
 Web: www.Powassan.net

10 Business Support Programs and Services

10.1 Government Services

The Municipality of Powassan

466 Main Street, PO Box 250
Powassan, ON
P0H 1Z0
Canada
Phone: 705-724-2813
Fax: 705-724-5533
Email: Kbester-Melanson@powassan.net
Web: www.Powassan.net

Canada Post

Powassan Post Office
495 Main Street
Powassan, ON P0H 1Z0
Phone: 705-724-293
Web: www.canadapost.ca

Trout Creek Post Office
151 Main Street West
Trout Creek, ON P0H 2L0
Phone: 705-723-5261
Web: www.canadapost.ca

North Eastern Ontario Communications Network Incorporated

124 Third Avenue, Suite 2
Timmins, ON P4N 1C5
Phone: 705-360-1353 x2
Email: dmcgirr@neonet.on.ca
Web: www.neonet.on.ca

Driver & Vehicle Issuing Office

520 Main Street
P.O. Box 68
Powassan, ON P0H 1Z0
Phone: 705-724-5493
Fax: 705-724-5493
Web: <http://www.mto.gov.on.ca/english/dandv/isssoff.shtml>

Ministry of Northern Development, Mines and Forestry

Minister's Northern Office
Suite 404 - 189 Red River Road
Thunder Bay, ON P7B 1A2
Phone: 807-343-7808
Fax: 807-343-7680
TTY Toll Free: 1-866-349-1388
Web: http://www.mndmf.gov.on.ca/default_e.asp

Service Ontario - North Bay Service Canada Centre

Powassan Community Profile 2013

Canada Place, Suite 102
107 Shirreff Avenue
North Bay, ON
Toll Free: 1-800-926-9105
Web: www.servicecanada.gc.ca

Powassan and District Union Public Library
324 Clark St.,
Box 160
Powassan, Ont. P0H 1Z0
Phone: 705-724-3618
Fax: 705-724 5525
E-mail: powlib@onlink.net
Web: <http://powlib.www2.onlink.net/index.htm>

The Business Centre - Nipissing Parry Sound

200 McIntyre Street East
P.O. Box 360
North Bay, ON P1B 8H8
Phone: 705-746-4455
Toll Free: 1-888-746-4455
Web: <http://www.thebusinesscentre-nps.com/>

The Business Centre Nipissing Parry Sound Inc. is a partnership between the City of North Bay, the Ministry of Economic Development and Trade, the Ministry of Northern Development, Mines and Forestry, and various community partners.

The office assists in the start-up of new and the expansion of existing businesses. Services include:

- One-on-one consultations
 - Review of business plans
 - Assistance with market research
 - Provision of relevant and timely business information
 - Mentoring and networking opportunities
 - Internet and computer access for business research & planning
 - Professional advisor referrals
 - Import and export information
 - Youth programming.
-

FedNor

Industry Canada | Industrie Canada
202-107 Shirreff Avenue South
North Bay ON P1B 7K8
Phone: 705-494-4226
Fax: 705-494-4227
Email: Ron.Begin@ic.gc.ca
Web: <http://www.ic.gc.ca/eic/site/fednor-fednor.nsf/eng/home>

Northern Ontario Heritage Fund Corporation

70 Foster Drive, Suite 200
Sault Ste. Marie, ON
P6A 6V8
Fax: 705-945-6701
Email: nohfc.ndm@ontario.ca
Web: http://www.mndm.gov.on.ca/nohfc/program_iacdp_e.asp

10.2 Chamber of Commerce and Business Associations

NECO Community Futures Development Corporation

195 First Avenue West
North Bay, ON P1B 3B8
Phone: 705-476-8822
Fax: 705-495-6038
Email: neco@vianet.ca
Website: www.neco.on.ca

Parry Sound Area Community Business & Development Centre Inc.

1A Church Street
Parry Sound, ON P2A 1Y2
Phone: 705-746-4455
Fax: 705-746-4435
Email: info@cbdc.parrysound.on.ca
Website: www.cbdc.parrysound.on.ca

Stepping Stones-La Passerelle Business Development Centre

1500 Fisher Street, Suite 207
North Bay, ON P1B 2H3
Phone: 705-475-1010
Email: jgalan@vianet.ca
Web: <http://www.steppingstones-lapasserelle.com/>

The Stepping Stones-La Passerelle Business Incubator is a community partnership that was created in 2006 by an eager group of business leaders, and dedicated funders to foster the growth of small businesses in the Blue Sky Region. Their mission is to assist new entrepreneurs by providing them with resources to accelerate the growth of their businesses and lead to produce successful firms that are financially viable after one year of incubation.

10.3 Education, Employment and Training Services

Post Secondary Institutions in North Eastern Ontario

Nipissing University

North Bay (Main Campus)
100 College Drive, Box 5002
North Bay, ON P1B 8L7
Phone: 705-474-3450
Fax: 705-474-1947
Web: www.nipissingu.ca

Major Programs: Business, Medicine, Science, Education

Canadore College

North Bay (Main Campus); Mattawa; Parry Sound; Sturgeon Falls
100 College Drive, P.O. Box 5001
North Bay, ON, P1B 8K9
Phone: 705-474-7600
Fax: 705-474-2384
Web: www.canadorec.on.ca

Major Programs: Automotive/Mechanical, Business, Construction, Health, Hospitality/Tourism, Information Technology

Academy of Learning Career and Business College

North Bay; Sault Ste. Marie; Sudbury
Web: www.academyoflearning.com/ON/HOME.aspx

Major Programs: Business, Health, Information Technology, Services

Laurentian University

935 Ramsey Lake Road
Sudbury, ON P3E 2C6
Phone: 705-675-1151
Fax: 705-675-4891
Web: www.laurentian.ca

Major Programs: Business, Engineering, Medicine, Science

Cambrian College

Sudbury (Main Campus); Espanola; Little Current
1400 Barrydowne Road
Sudbury, ON P3A 3V8
Phone: 705-566-8101
Toll Free: 1-800-461-7145
Web: www.cambriancollege.ca/index.php

Major Programs: Automotive/Mechanical, Business, Health, Hospitality/Tourism, Information Technology

Powassan Community Profile 2013

Collège Boréal

Sudbury (Main Campus); Hearst; Kapuskasing; New Liskeard; Nipissing; Timmins
21 boulevard Lasalle
Sudbury, ON P3A 6B1
Phone: 705-560-6673
Web: www.borealc.on.ca/index.asp?ref=251&l=e

Major Programs: Automotive/Mechanical, Business, Construction, Forestry, Health, Information Technology

Northern College (Northern College of Applied Arts and Technology)

Timmins (Main Campus); Haileybury; Kirkland Lake; Moosonee; South Porcupine
Mail: P.O. Box 3211
Timmins ON P4N 8R6
Phone: 705-235-7222
Toll Free: (Ontario) 1-866-736-5877
Fax: 705-235-7279
Web: www.northernnc.on.ca

Major Programs: Business, Construction, Health, Information Technology

Sault College

Sault Ste. Marie, ON
Phone: 705-759-2554
Web: www.saultc.on.ca/#

Major Programs: Automotive/Mechanical, Business, Construction, Forestry, Health, Hospitality/Tourism

Everest College of Business, Technology and Health Care

Sudbury
Phone: 877-390-2799
Web: www.everest.ca

Major Programs: Business, Finance, Health, Information Technology

Transport Training Centres of Canada

Sudbury (Main Campus); North Bay; Sault Ste. Marie; Timmins
17 Willow Street
North Bay, ON P1B 8Z4
Phone: 705-840-1176
Fax: 705-840-2812
Web: www.ttcc.ca

Major Programs: Heavy Equipment and Commercial Truck Training

Université de Hearst (French Only)

Hearst; Kapuskasing; Timmins
7 avenue Aurora,
Kapuskasing, ON P5N 1J6
Phone: 705-335-8561
Toll Free: 1-866-335-8561
Web: <http://www.uhearst.ca/>

Major Programs: Business and Administration, French, Geography, History, Economics, Political Science, Psychology, Social Services, Sociology, Translation

Powassan Community Profile 2013

10.4 Area Financial Institutions

Assante

535 Main Street
Powassan, ON P0H 1Z0
Phone: 705-724-2400
Fax: 705-724-1771

Scotiabank

475 Main Street
P O Box 129
Powassan, ON P0H 1Z0
Phone: 705-724-2942
Fax: 705-724-5463
Web: www.scotiabank.com

Despres Pacey Insurance Brokers

530 Main Street
Powassan, ON P0H 1Z0
Phone: 705-724-2932
Fax: 705-724-3813

Miltown Systems

91 Alderdale Road
Chisholm, ON
Phone: 705-752-0383 x2

Robert J van der Wijst Law Office

472 Main Street (at back)
Powassan, ON P0H 1Z0
Phone: 705-724-3520
Fax: 705-382-3621
Web: <http://www.legalfit.com>

Powassan Insurance Brokers, O/B Demarco - Lucenti

357 Main Street
P.O. Box 10
Powassan, ON P0H 1Z0
Phone: 705-724-2346
Fax: 705-724-3820

10.5 Real Estate

Century 21- Blue Sky Region Realty Inc.

Allan and Debbie Berg
472 Main Street
Powassan, ON P0H 1Z0
Phone: 705-724-1100
Fax: 705-724-9964
Web: <http://www.century21.ca/blueskyregionrealty>

Flatfee Realty Inc., Brokerage

Bob Loy and Monica Gibbings
473 Main Street
P.O. Box 97
Powassan, ON P0H 1Z0
Phone: 705-724-2333
Fax: 705-724-9800
Web: <http://www.flatfeerealty.ca/node/>

Re/Max Legend Real Estate Inc. Brokerage

Brenda and Brittany Stillar
487 Main Street
Powassan, ON P0H 1Z0
Phone: 705-724-1780
Fax: 705-724-1781
Web: <http://www.remax-qa.com/on/remax-legend-real-estate-inc-real-estate-780-br/>

10.6 Economic Development

The Municipality of Powassan is located strategically along Highway 11 where it markets itself in the local, regional, national and global markets as a competitive, resourceful and quality place to do business, invest and live. In order to achieve many of its goals, the Powassan Economic Development Office works closely with the municipality facilitating a variety of marketing activities for Powassan.

Table 40: Research & Development Facilities within 80 km

Name	Municipality	Area of Research
Fabrene Inc.	North Bay	polypropylene
Atlas Copco	North Bay	diamond drill bits
Dyno Nobel Canada Inc.	North Bay	explosives
Arclin	North Bay	chemical manufacturing resins and adhesives
Canadore College / Nipissing University	North Bay	environments / technological
Northeast Mental Health Centre	North Bay	medical

Source: McSweeney & Associates from

http://www.sse.gov.on.ca/medt/investinontario/en/Pages/communities_econstrategies.aspx?mun_name=3549060&topic=2

For further information please contact:

Kimberly Bester-Melanson
 The Municipality of Powassan
 466 Main Street, PO Box 250
 Powassan, ON
 P0H 1Z0
 Canada
 Phone: 705-724-2813
 Fax: 705-724-5533
 Email: Kbester-Melanson@powassan.net
 Web: www.Powassan.net

11 Quality of Life

11.1 Housing Characteristics

Table 41: Residential Assessment Property Values, MPAC 2008

Property Type	Average Assessment
Single family detached (not on water)	\$149,418
Semi-detached residential - two residential homes sharing a common center wall with separate ownership	N/A
Freehold Townhouse/Row house - more than two units in a row with separate ownership	N/A
Residential Condominium Unit	N/A

Source: MPAC 2008 http://www.investinontario.com/communities/realestate.asp?mun_name=3556066&topic=1

Table 42: Dwelling Characteristics for Powassan, 2012

Characteristics	Powassan	Ontario
Total number of occupied private dwellings	1333	5082414
Average number of rooms per dwelling	7.13	6.65
Average number of bedrooms per dwelling	2.97	2.77
Owned	1125	3637386
Rented	208	1438135
Average value of dwelling \$	184,943	426787

Source: McSweeney & Associates from Manifold Data Mining Inc. Superdemographics 2012.

11.2 Health and Social Services

The Municipality prides itself on the diversity of health care available both within the community and regionally. Powassan is currently only thirty minutes from the North Bay hospital and has access to specialized care in hospitals and clinics in Sudbury, less than two hours north on Highway 11.

The Municipality is a contributor and partner in a new state of the art The North Bay Regional Health Centre, which will open January 30, 2011 and is forty-five minutes from Powassan. The Municipality is also proud to be a contributor to the Sudbury Regional Cancer Centre.

Powassan is a financial partner and supporter of One Kids Place, a children's treatment centre in North Bay, offering a range of services to help children, youth and their families with physical, development and communication delays and disabilities.

Powassan have been awarded a Family Health Team that will be operational in August 2011. The municipality will have new interdisciplinary health care providers and be in a much better position to attract new physicians to the area who will practice through the Family Health Team. Please visit: <http://powassan.net/pagesmith/107> for more information.

Powassan Medical Centre

8 King Street East

Powassan, ON P0H 1Z0

Physicians: Dr. Ken Runciman 705-724-3388, Dr. Scott Houghton 705-724-5511

Chiropractor: Dr. Kreps 705-724-5800

Physiotherapists: Claude Martel and Mike Mitchell 705-724-9851

Dentist: Dr. Terence Wong 705-724-2900

Powassan Community Profile 2013

Massage Therapist Massage and Mobility: 705-493-2143
Natural Therapist: Marianne Willars
HANDS The Family Help Network: <http://www.powassan.net/pagesmith/48>

Eastholme, Home for the Aged
62 Big Bend Avenue S, P.O. Box 400
Powassan, ON P0H 1Z0
Phone: 705-724-2005
Email: easthome@onlink.net
Web: <http://www.eastholme.ca/>

Lady Isabelle Nursing Home
102 Corkery Street, P.O. Box 10
Trout Creek, ON P0H 2L0
Phone: 705-723-5232 x221 or x223 on weekends and holidays
Email: main@ladyisabelle.ca
Web: <http://www.ladyisabelle.ca/index.htm>

North Bay General Hospital (until January 29, 2011)
Scollard Site
750 Scollard Street
P.O. Box 2500
North Bay, ON P1B 5A4
Phone: 705-495-8127
Fax: 705-495-7985
Email: stephp@nbgh.on.ca
Web: <http://www.nbgh.on.ca/>

Northeast Mental Health Centre
North Bay Campus
4700 Highway 11 N
North Bay, ON P1B 8L1
Phone: 705-474-1200
Fax: 705-474-5723
Web: <http://www.nemhc.on.ca/>

North Bay Parry Sound District Health Unit
681 Commercial Street
North Bay, ON
Phone: 705-474-1400
Web: <http://www.healthunit.biz/>

DMG Naturopathic Clinic
Dr. Diana Giles
480 Fisher Street
North Bay, ON P1B 9M9
Phone: 705-497-8788
Email: drdiannagiles@bellnet.ca
Web: <http://www.dmgnaturopathy.com/>

Brighter Daze Homecare
Phone: 705-723-5186

Powassan Community Profile 2013

Birthcare Midwifery

472 Main Street
Powassan, ON
Phone: 705-724-2229

Caring Moments

8 King Street
Powassan, ON P0H 1Z0
Phone: 705-476-9828
Web: <http://caringmoments.ca>

Clement's IDA Pharmacy

497 Main Street
P.O. Box 177
Powassan, ON P0H 1Z0
Phone: 705-724-3523
Fax: 705-724-5347

Dr. Ken Runciman-Physician

8 King Street E
Powassan Medical Centre
Powassan, ON P0H 1Z0
Phone: 705-724-3388
Fax: 705-724-5499

Dr. Scott Houghton-Physician

8 King Street East
P.O. Box 39
Powassan, ON P0H 1Z0
Phone: 705-724-5511
Fax: 705-724-5499

Dr. Scott Houghton-Physician

8 King Street East
P.O. Box 39
Powassan, ON P0H 1Z0
Phone: 705-724-5511
Fax: 705-724-5499

Dr. Terence K. Wong-Dentist

8 King Street
Lower level of the Medical Building
Powassan, ON P0H 1Z0
Phone: 705-724-2900
Fax: 705-724-2901
Web: <http://www.powassandental.com>

Glenn Pharmacy

488 Main
Powassan, ON P0H 1Z0
Phone: 705-724-2741
Fax: 705-724-3380

Powassan Community Profile 2013

Kreps Chiropractic Centres

Powassan Medical Centre
8 King St. Box 248
Powassan, ON P0H 1Z0
Phone: 705-724-5800
Fax: 705-724-2927

Martel and Mitchell Physiotherapy

8 King Street
P.O Box 7
Powassan, ON P0H 1Z0
Phone: 705-724-9851
Fax: 705-724-9000

Massage and Mobility

8 King Street
Medical Building
Powassan, ON P0H 1Z0
Phone: 705-493-2143
Fax: 705-724-9000

Telehealth Ontario

Phone: 416-314-8721
Web: www.health.gov.on.ca/english/public/program/Telehealth/Tele_faq.html
Free Access to a Registered Nurse — 24 Hours a day, 7 days a Week at 1-866-797-0000
TTY: 1-866-797-0007

Telehealth Ontario is a free, confidential telephone service for health advice or general health information from a Registered Nurse. That means quick, easy access to a qualified health professional to help you decide whether to care for yourself, make an appointment with your doctor, go to a clinic, contact a community service or go to a hospital emergency room.

11.3 Education

School Boards in the Powassan Area

English Public

Near North District School Board

963 Airport Road

P.O. Box 3110

North Bay, ON P1B 8H1

Phone: 705-472-8170

Toll Free: 1-800-278-4922

Fax: 705-472-9927

Email: info@nearnorthschools.ca

Web: <http://www.nearnorthschools.ca/>

English Catholic

Nipissing-Parry Sound Catholic District School Board

1000 High Street

North Bay, ON P1B 6S6

Phone: 705-472-1201

Fax: 705-472-0507

Email: contact@npssc.ca

Web: <http://www.npsc.edu.on.ca/>

French Public

Conseil Scolaire Publique du Nord-Est de l'Ontario (located outside the Municipality)

310 avenue Algonquin – C.P. 3600

North Bay, ON P1B 9T5

Phone: 705-472-3443

Toll Free: 1-888-591-5656

Email: information@csdne.edu.on.ca

Web: <http://www.csdne.edu.on.ca/index.html>

French Catholic

Conseil Scolaire Catholique – Franco-Nord (located outside the Municipality)

681 Chippewa Street West

North Bay, ON P1B 6G8

Phone: 705-472-1702

Fax: 705-474-3824

Web: <http://www.franco-nord.edu.on.ca/>

For a list of post-secondary education facilities in North Eastern Ontario, see section 9.3.

Powassan Community Profile 2013

Table 43: Public Schools

Elementary Schools				
School Name	Location	Grades	Language	Telephone
Mapleridge Public School	Powassan	JK - 8	English	705-724-5080
École Elementaire Publique Héritage	East Ferris	JK - 6	French	705-472-0652
High Schools				
School Name	Location	Grades	Language	Telephone
Odyssée Secondary School	North Bay	7 - 12	French	705-474 5500
Almaguin Highlands Secondary School	South River	9 - 12	English	705-472-5563
Chippewa Intermediate and Secondary School	North Bay	7 - 12	English and French Immersion	705-475-2341
Widdifield Secondary School	North Bay	9 - 12	English	705-472-5711
West Ferris Secondary School	North Bay	9 - 12	English	705-475-2333
École Publique Odyssey	North Bay	7 - 12	French	705-474-5500
École Secondaire Catholique Algonquin (E.S.C.A)	North Bay	9 - 12	French	705-472-8240

Source: McSweeney & Associates from the Municipality of Powassan

Table 44: Catholic Schools

Elementary Schools				
School Name	Location	Grades	Language	Telephone
St. Gregory's Catholic School	Powassan	JK - 8	French Immersion & English	705-335-3241
St. Theresa's Catholic School	Callander	JK - 8	French	705-335-6197
École Separée Saint Thomas-D'Aquin	North Bay	JK - 8	French	N/A
High Schools				
School Name	Location	Grades	Language	Telephone
St. Joseph - Scollard Hall	North Bay	9 - 12 (bus service provided)	French	705-494-8600
École Secondaire Algonquin	North Bay	9 - 12	French	N/A

Source: McSweeney & Associates from the Municipality of Powassan

11.4 Protective Services

Emergency Phone Number: 911

The Municipality of Powassan offers the following emergency service providers:

- OPP
- Ambulance services
- Fire department.

Powassan Fire Department

Volunteer Fire Department

Stations 1&2

Fire Chief Bill Cox

Phone: 705-724-3510

Web: <http://www.powassan.net/pagesmith/10>

The Municipality of Powassan has a very dedicated Volunteer Fire Department. Station 1 is located at 466 Main Street in Powassan, and Station 2 at 130 Main Street in Trout Creek. The Department holds a Foodbank Drive each year during the spring.

Fire Chief: Bill Cox

Fire Prevention Officer: Davey Meloy 705-499-3376

Station #1 Phone: 724-3522

Station #2 Phone: 723-5253

Ontario Provincial Police

24 hours service in the Municipality call:

Toll Free: 1-888-310-1122

911 emergency service

Staff Sergeant J. Strba

Ambulance

12 hrs/day staffed service available in Municipality

Parry Sound EMS

Phone: 705-474-7400

Emergency Rooms

North Bay General Hospital – Scollard Site (until January 2011)

Phone: 705-474-8600

Powassan Community Profile 2013

11.5 Recreation, Tourism and Events

Powassan is committed to ensuring a variety of recreation, leisure and open space opportunities to preserve and enhance quality of life. Some options include walking/hiking/mountain bike trails, playing fields, ice rinks, playgrounds, and beaches and equestrian centre.

The Knowlton Ridge Equestrian Centre is a major equestrian centre located in Powassan, providing year round recreation facilities for equestrians.

In addition to hotel accommodation, there is one campground and two bed and breakfast establishments.

Table 45: Tourism Facilities

Facility		Facility	
Hotels/motels/resorts	2	Total No. of Rooms	24
Convention Centers	0	Size of the largest Convention Center (sq.ft.)	0
Community Centres	3	Libraries	1
Daycares and Preschool Facilities	2	Capacity of Daycares and Preschool Facilities	97
Facilities for Seniors	2	Ice Arenas	2
Marina	0	Theatres	0
Cinemas	0	Museums	1
Galleries	0	Baseball Diamonds	2
Soccer / Football Fields	1	Public Transit	no
Indoor Swimming Pools	0	Outdoor Swimming Pools	1
Public Tennis Courts	1	Private Tennis Courts	0
Public Golf Courses	1	Private Golf Courses	0

Source: Municipality of Powassan, http://www.sse.gov.on.ca/medt/investinontario/en/Pages/communities_qofl.aspx?mun_name=3549060&topic=3

Municipal Facilities

Powassan and District Union Public Library

324 Clark Street
 Box 160
 Powassan, ON P0H 1Z0
 Phone: 705-724-3618
 Fax: 705-724-5525
 Email: powlib@onlink.net
 Web: <http://powlib.www2.onlink.net>

Library Hours

Monday, Tuesday & Thursday 10:30 a.m. – 8 p.m., Friday 10:30 – 6:00, Saturday 11 – 4, Closed Wednesday and Sunday

Book Club: 2nd Tuesday of each month at 1:30 pm

Friends of the library: First Monday of each month at 6:30 pm

Library Board: Last Monday of Month at 7 pm

Raising Readers: Tuesdays at 6:15 pm

Knitting Club: Fridays 10:30 am - 1:00 pm

Powassan Community Profile 2013

Services

All services are free except for those marked with an *

Photocopy Service: \$.20 per page *

Computer services: Internet Access, Microsoft Word, Word Perfect, Microsoft Access, Microsoft Excel, Microsoft Publisher, Microsoft Power Point, Children's Software, Internet Training, E-mail Training, Basic Computer

Training Scanner: Staff Operated \$1.00 * Printing \$.30 per page *

New wireless internet service: \$2.00/hr or \$10/8 hrs of Internet use. Vouchers can be purchased at the library and can be used for Internet service at other local libraries as well.

Fax service: Send up to 5 pages local \$2/ 6-10 pages local \$4 /Long distance up 5 pages \$4 /6-10 pages \$6 / International is extra. Receive up to 5 pages \$2/ 6-10 pages \$4

The Powassan and District Union Library is equipped for computer use, training and wireless high speed internet. Meeting rooms, complete with kitchen, are available for rental. Special programs include children's events, book clubs and educational guest speakers. An Art Studio on the lower level showcases works by local and regional artists and artisans.

Clark House Museum

P.O. Box 258

Powassan, ON P0H 1Z0

Phone: 705-724-2601

The Powassan Historical Society operates the Clark House Museum open from May to September. Located off Fairview Lane in the century home of one the Powassan's founding families, the interactive museum contains many local historic documents and family records as well as displaying household and agricultural items of past eras. The house and grounds are home to the annual History Alive Day which highlights a specific historical theme each year in addition to hosted museum tours, outdoor displays, antique equipment and cars, barbeques and live music. Every October, the museum is transformed into a spine chilling haunted house for tours by local school children. The Clark House Museum is part of the Near North Heritage Group of area museums and can be visited at www.nnhg.ca.

District of Parry Sound Social Services

10 Toronto Street

South River, ON

Phone: 705-386-2358

Parry Sound District Social Services Administration Board

1 Beechwood Drive, 2nd Floor

Parry Sound, ON P2A 1J2

Phone: 705-746-7777

Fax: 705-746-7783

Web: <http://www.psdssab.org/>

Fairview Children's Centre

Located in St. Gregory's School

152 Fairview Lane

Powassan, ON P0H 1Z0

Phone: 705-724-5462

Web: <http://www.psdssab.org/childcare/licensedcare.php>

Almaguin Highlands Community Living

P. O. Box 370
Sundridge, ON P0A 1Z0
Phone: 705-384-5384
Fax: 705-384-7695
Email: admin@ahcl.org
Web: <http://www.ahcl.org/>

Sportsplex Community Recreation Centre

433 Main Street
Powassan, ON
Phone: 705-724-2537
Email: chebert@powassan.net
Web: <http://www.powassan.net/pagesmith/75>

- ice surface for hockey, figure skating and private events
- hall with kitchen and bar facilities available for rentals

Curling Club

433 Main Street
Powassan, ON

- operated by volunteer group
- attached to Sportsplex offering two surfaces for games
- small kitchen and bar facilities
- available for rentals

Trout Creek Community Centre

181 Main Street
Trout Creek, ON
Phone: 705-723-5372
Web: <http://www.powassan.net/pagesmith/76>

- ice surface for hockey, figure skating and private events
- hall with kitchen and bar facilities available for rentals.

Powassan Lions Pool (outdoor)

355 Edward Street
Powassan, ON

- open from first Monday in June to last week of August
- swimming lessons – three sessions per year
- public swimming afternoons Monday to Saturday
- available for rentals

South River Reservoir Beach and Boat Launch

End of Purdon Line – locally known as the Hydro Pond

- beach area - no lifeguards provided
- pavilion for picnic
- raft for more advanced swimmers and divers
- boat launch
- dog area at boat launch
- washroom facilities

Powassan Community Profile 2013

Private Recreation Centres

There is a wide assortment of extracurricular programs available to the community. Powassan is fortunate to have a sports academy in the urban area that offers a range of programming. Additional recreation programming is available in North Bay.

DLB Academy of Sport and Recreation

D.L.B Academy
250 Clark Street
Powassan, ON P0H 1Z0
Phone: 705-724-5125
Toll Free: 1-866-724-5125
Fax: 705-724-3957
Email: ldec@dlbacademy.com
Web: <http://www.dlbacademy.com/>

- state of the art fitness centre, open extended hours with key pass system
- soccer camp in summer months
- gym rentals
- fitness classes available

The North Bay YMCA

186 Chippewa Street West
North Bay, ON P1B 6G2
Phone: 705-497-9622
Fax: 705-474-5116
Web: <http://www.ymcanorthbay.com/>

- within driving distance
- all typical programs and has an excellent aquatic facility

Parks and Playgrounds

Parks and playgrounds are open from May long weekend to September long weekend from sunrise to sunset.

Powassan Lions Park

Main Street and Edward Street

- playground equipment for ages 5-12
- ball diamond
- Genesee Creek nearby for fishing
- fenced pad for road hockey, skateboarding

South Himsworth Park

7 Glendale Heights

- baseball diamond and soccer fields
- swing set
- hall for rent with kitchen – contact Powassan Lions for information

Trout Creek Playground

181 Main Street

- baseball diamond
- tennis courts

Powassan Community Profile 2013

- playground equipment for ages 2-12
- also the fair grounds for the Agricultural Fair
- hosts the Relay for Life in June

Veterans Memorial Park

Corner of Main Street and Memorial Park Drive

- Horticultural Society flower beds
- community gazebo

Pines Interpretative Trails

The Pines hiking trails are located at the end of Catherine Street in Powassan behind Eastholme. The property is leased from Eastholme to the Municipality for community use. There are three main four season trails for users to discover at their leisure. The Lookout Trail will take you to the top of the mountain for a spectacular view of the area. The Genesee Trail will take you up and down hills and travel alongside the Genesee Creek. The Big Bend Trail is an easy trail for a beginner that includes portions of roadway. You may hike, cross country ski, snowshoe or mountain bike through the trails. No motorized vehicles are permitted.

Web: <http://www.powassan.net/pagesmith/30>

Tourism

Powassan's many resident volunteers and community organizations host a number of unique events and festivals throughout the year. The sense of pride exhibited at these events is remarkable and a warm welcome awaits all who attend.

Trout Creek Winter Carnival

Where: Trout Creek Community Centre

When: 2nd weekend in February

Activities: tiny tot pageant, bingo, skating, family hockey tournament, pancake breakfast

Maple Syrup Festival

Where: Main Street, Powassan

When: 4th Saturday of April

Activities: loggers, pancake breakfast, food booths, children's activities, craft booths, live music, horse drawn rides, free trips to sugar bush

Canada Day Celebration

Where: South Himsworth Park

When: July 1st

Activities: fireworks, children's games, hot dogs, live music

Trout Creek Agricultural Society's Fall Fair

Where: Trout Creek Community Centre

When: 2nd last weekend in August

Activities: corn roast, horse show, children's games, craft exhibits, baking

Powassan Agricultural Society's Fall Fair

Where: Powassan Fairgrounds, Fairview Lane

When: Labour Day Weekend

Activities: parade, heavy horse pulls, demolition derby, live music, midway, home crafts, poultry show

Powassan Community Profile 2013

Horse Shows

Where: Knowlton Ridge Equestrian Centre, Main Street, Powassan

When: There are more than 15 shows throughout the spring, summer and fall.

Activities: Trillium Horse Shows, English and Western Schooling Shows, Pony Club, and Summer Camps

11.6 Events

Table 46: Annual Events 2010

Annual Events 2010	
Date	Name of Event
2nd weekend in February	Trout Creek Winter Carnival
4th Saturday of April	Maple Syrup Festival
July 1st	Canada Day Celebration
2nd last weekend in August	Trout Creek Agricultural Society's Fall Fair
Labour Day Weekend	Powassan Agricultural Society's Fall Fair
spring, summer and fall	Horse Shows

Source: Municipality of Powassan

Powassan Community Profile 2013

11.7 Local Media

Table 47: Newspapers

Newspaper	Frequency
The Almaguin News	Weekly, online
North Bay Nugget	Daily, online
Toronto Star	Daily
Globe and Mail	Daily
Ottawa Citizen	Daily
Bay Today	On-line

Source: Municipality of Powassan,
http://www.sse.gov.on.ca/medt/investinontario/en/Pages/communities_transportation.aspx?mun_name=3549060&topic=2

Table 48: Radio Stations

Radio Station	Affiliation
CKFX – 101.9 FM	Rogers Communications Inc.
CKAT – 600 AM	Rogers Communications Inc.
CHUR – 100.5 FM	Rogers Communications Inc.
CBC Radio One – 96.1 FM	Canadian Broadcasting Corporation
CKTR – 104.9 FM	Blue Sky Radio

Source: Municipality of Powassan,
http://www.sse.gov.on.ca/medt/investinontario/en/Pages/communities_transportation.aspx?mun_name=3549060&topic=2

Table 49: Cable Service

Name	Telephone
EastLink Cable Company	1-888-345-1111

Source: Municipality of Powassan,
http://www.sse.gov.on.ca/medt/investinontario/en/Pages/communities_transportation.aspx?mun_name=3549060&topic=2

Table 50: Television

TV Station (eg. CFTO-Toronto)	Affiliation (eg. CTV)
CKNY	CTV Globemedia Inc.
CHNB	Canadian Broadcasting Corporation
CHCH - 6	CanWest Interactive Inc.
GLOBAL	CanWest Interactive Inc.
TVO	TV Ontario Inc.

Source: Municipality of Powassan,
http://www.sse.gov.on.ca/medt/investinontario/en/Pages/communities_transportation.aspx?mun_name=3549060&topic=2

12 Local Accommodations

Munro Park Campgrounds

91 Parkline Road
R.R. #2
Powassan, ON
P0H 1Z0
Phone: 705-724-5554

Princess Motel

3541 Hwy 522B
Trout Creek, ON
P0H 2L0
Phone: 705-723-5230
Fax: 705-724-1274

Sparrows Nest Bed Breakfast

30 King Street
Powassan, ON
P0H 1Z0
Phone: 705-724-1183
Web: <http://www.bbcanada.com/11080.html>

TJ's Restaurant & Motel

3660 Highway 522 B
Trout Creek, ON
P0H 2L0
Phone: 705-723-5000
Fax: 705-723-5005

Westfalenhaus Bed and Breakfast

277 Memorial Park Drive
Powassan, ON
P0H 1Z0
Phone: 705-724-2314
Fax: 705-724-6455

Appendix - Incentives

Capital Incentives

Ontario Emerging Technologies Fund - Ontario Capital Growth Corporation
<http://www.ocgc.gov.on.ca/site/en/funds/ontario-emerging-technologies-fund/>

Business Development Bank of Canada
<http://www.bdc.ca/en/home.htm>

Canada Small Business Financing Program - Industry Canada
<http://www.ic.gc.ca/eic/site/csbfp-pfpec.nsf/eng/Home>

Canadian Youth Business Foundation Start-Up Financing Program
<http://www.cybf.ca/entrepreneurs/>

Eastern Ontario Development Fund - Ministry of Economic Development
<http://www.omafra.gov.on.ca/english/food/industry/east-ont-dev-fund.htm>

FEDNOR - Applied Research and Development Program
<http://www.ic.gc.ca/eic/site/fte-fte.nsf/eng/00013.html>

Loan Guarantee Program - Ontario Ministry of Northern Development, Mines and Forestry
http://www.mndmf.gov.on.ca/forestry/competitiveness_programs/loan_guarantee_program_e.asp

NextGen Biofuels Fund - Sustainable Development Technology Canada
http://www.sdte.ca/index.php?page=nextgen-funding-niche&hl=en_CA

NOHFC - Northern Energy Program
http://www.mndmf.gov.on.ca/nohfc/programs/northern_energy_e.asp

NOHFC - Private Sector Emerging Technology Program
http://www.mndmf.gov.on.ca/nohfc/programs/emerging_technology_e.asp

Community Futures Program – Ontario
<http://www.ontcfdc.com/frame1.asp>

Ontario Innovation Demonstration Fund
<http://www.mri.gov.on.ca/english/programs/idf/guidelines.asp>

SD Tech Fund - Sustainable Development Technology Canada
http://www.sdte.ca/index.php?page=sdtech-funding-niche&hl=en_CA

SMART Program - Canadian Manufacturers & Exporters
<http://www.cme-smart.ca/>

Powassan Community Profile 2013

Strategic Aerospace and Defence Initiative - Industry Canada

http://ito.ic.gc.ca/eic/site/ito-oti.nsf/eng/h_00022.html

Summer Company

http://www.ontariocanada.com/ontcan/1medt/smallbiz/en/sb_ye_summerco_en.jsp

Rural Economic Development (RED) Program

<http://www.omafra.gov.on.ca/english/rural/red/>

Commercialization Incentives

Eastern Ontario Development Fund - Ministry of Economic Development

<http://www.omafra.gov.on.ca/english/food/industry/east-ont-dev-fund.htm>

NextGen Biofuels Fund - Sustainable Development Technology Canada

http://www.sdtc.ca/index.php?page=nextgen-funding-niche&hl=en_CA

NOHFC - Private Sector Emerging Technology Program

http://www.mndmf.gov.on.ca/nohfc/programs/emerging_technology_e.asp

Ontario Centres of Excellence Inc.

<http://www.oce-ontario.org/Pages/Home.aspx>

Ontario Innovation Demonstration Fund

<http://www.mri.gov.on.ca/english/programs/idf/guidelines.asp>

SD Tech Fund - Sustainable Development Technology Canada

http://www.sdtc.ca/index.php?page=sdtech-funding-process&hl=en_CA

MaRS Discovery District (MaRS)

www.marsdd.com

Ontario Research Fund - Ontario Ministry of Research and Innovation

<http://www.mri.gov.on.ca/english/programs/ResearchFund.asp>

Precarn Incorporated

<http://www.precarn.ca/ProgramsFunding/index.html>

Technology Development Fund - Ontario Power Authority

<http://www.powerauthority.on.ca/tdfund/>

Energy Incentives

NextGen Biofuels Fund - Sustainable Development Technology Canada

http://www.sdtc.ca/index.php?page=nextgen-funding-niche&hl=en_CA

NOHFC - Northern Energy Program

http://www.mndmf.gov.on.ca/nohfc/programs/northern_energy_e.asp

SMART Program - Canadian Manufacturers & Exporters

<http://www.cme-smart.ca/>

Powassan Community Profile 2013

Technology Development Fund - Ontario Power Authority
<http://www.powerauthority.on.ca/tdfund/>

High Performance New Construction
<http://www-opa.hpnc.ca/about.aspx>

Feed-in Tariff Program - Ontario Power Authority
<http://fit.powerauthority.on.ca/>

Export Incentives

Canadian Commercial Corporation (CCC)
<http://www.ccc.ca/eng/home.cfm>

Export Development Canada
<http://www.edc.ca/>

Export Market Access - A Global Expansion Program
<http://exportaccess.ca/>

Going Global Innovation - Foreign Affairs and International Trade Canada
<http://www.tradecommissioner.gc.ca/eng/science/document.jsp?did=88059>

New Exporters to Border States (NEBS)
<http://www.canadabusiness.ca/eng/summary/3266/>

Human Resources and Training Incentives

Ontario Centres of Excellence Inc.
<http://www.oce-ontario.org/Pages/Home.aspx>

MaRS Discovery District (MaRS)
www.marsdd.com

Achieving Innovation & Manufacturing Excellence - Yves Landry Foundation
http://www.yveslandryfoundation.com/article/48/aime_initiative_provincial.html

Apprenticeship Job Creation Tax Credit - Canada Revenue Agency
<http://www.cra-arc.gc.ca/tx/ndvdl/tpcs/ncm-tx/rtrn/cmpltng/ddctns/lns409-485/412/jctc-eng.html>

Apprenticeship Training Tax Credit
<http://www.rev.gov.on.ca/en/credit/attc/>

Canada Summer Jobs
<http://www.servicecanada.gc.ca/eng/epb/yi/yep/programs/scpp.shtml>
Employer Signing Bonus
http://www.tcu.gov.on.ca/eng/employers/emp_bonus.html

FEDNOR - Youth Internships - Private Sector Program
<http://www.ic.gc.ca/eic/site/fednor-fednor.nsf/eng/fn03441.html>

Powassan Community Profile 2013

Industrial R & D Fellowships - Natural Sciences and Engineering Research Council of Canada
http://www.nserc-crsng.gc.ca/Partners-Partenaires/Programs-Programmes/IRDFProfile-BPRDIProfile_eng.asp

Industrial Research Assistance Program - National Research Council Canada
<http://www.nrc-cnrc.gc.ca/eng/ibp/irap/about/index.html>

Canadian Institutes of Health Research - Innovation and Industry Programs
<http://www.cihr-irsc.gc.ca/e/37788.html>

Youth Employment Program - National Research Council Canada
<http://www.nrc-cnrc.gc.ca/eng/services/irap/youth-initiatives.html>

NOHFC - Enterprise North Job Creation Program
http://www.mndmf.gov.on.ca/nohfc/programs/enterprises_north_job_creation_e.asp

NOHFC - Northern Ontario Youth Internship and Co-op Program
http://www.mndmf.gov.on.ca/nohfc/programs/youth_internship_and_co-op_e.asp

Ontario Labour Market Partnerships
<http://www.tcu.gov.on.ca/eng/employers/labourMarket.html>

Ontario Summer Jobs Service
<http://www.tcu.gov.on.ca/eng/employmentontario/employers/hiresummer.html>

Targeted Wage Subsidies Program
<http://www.servicecanada.gc.ca/eng/epb/ebsm/index.shtml>

The Workplace Skills Initiative - Human Resources and Skills Development Canada
<http://www.hrsdc.gc.ca/eng/workplaceskills/programs/index.shtml>

Work-Sharing Program - Human Resources and Skills Development Canada
<http://www.hrsdc.gc.ca/eng/corporate/budget/2009/wsp.shtml>

Small Business Internship Program - Industry Canada
<http://www.servicecanada.gc.ca/eng/goc/sbip/index.shtml>

Rural Economic Development (RED) Program
<http://www.omafra.gov.on.ca/english/rural/red/>

Powassan Community Profile 2013

Northern Ontario Incentives

Loan Guarantee Program - Ontario Ministry of Northern Development, Mines & Forestry
http://www.mndmf.gov.on.ca/forestry/competitiveness_programs/loan_guarantee_program_e.asp

NOHFC - Northern Energy Program
http://www.mndmf.gov.on.ca/nohfc/programs/northern_energy_e.asp

NOHFC - Private Sector Emerging Technology Program
http://www.mndmf.gov.on.ca/nohfc/programs/emerging_technology_e.asp

Rural Economic Development (RED) Program
<http://www.omafra.gov.on.ca/english/rural/red/>

FEDNOR - Youth Internships - Private Sector Program
<http://www.ic.gc.ca/eic/site/fednor-fednor.nsf/eng/fn03441.html>

NOHFC - Enterprise North Job Creation Program
http://www.mndmf.gov.on.ca/nohfc/programs/enterprises_north_job_creation_e.asp

NOHFC - Northern Ontario Youth Internship and Co-op Program
http://www.mndmf.gov.on.ca/nohfc/programs/youth_internship_and_co-op_e.asp

NOHFC - Infrastructure and Community Development Program
http://www.mndmf.gov.on.ca/nohfc/programs/infrastructure_and_community_development_e.asp

Research and Development Incentives

Ontario Emerging Technologies Fund - Ontario Capital Growth Corporation
<http://www.ocgc.gov.on.ca/site/en/funds/ontario-emerging-technologies-fund/>

FEDNOR - Applied Research and Development Program
<http://www.ic.gc.ca/eic/site/fte-fte.nsf/eng/00013.html>

NextGen Biofuels Fund - Sustainable Development Technology Canada
http://www.sdte.ca/index.php?page=nextgen-funding-niche&hl=en_CA

NOHFC - Private Sector Emerging Technology Program
http://www.mndmf.gov.on.ca/nohfc/programs/emerging_technology_e.asp
Ontario Centres of Excellence Inc.
<http://www.oce-ontario.org/Pages/Home.aspx>

Ontario Innovation Demonstration Fund
<http://www.mri.gov.on.ca/english/programs/idf/guidelines.asp>

Ontario Innovation Tax Credit (OITC)
<http://www.rev.gov.on.ca/english/credit/oitc/index.html>
SD Tech Fund - Sustainable Development Technology Canada
http://www.sdte.ca/index.php?page=sdtech-funding-process&hl=en_CA

Strategic Aerospace and Defence Initiative - Industry Canada
http://ito.ic.gc.ca/eic/site/ito-oti.nsf/eng/h_00022.html

Powassan Community Profile 2013

Ontario Research Fund - Ontario Ministry of Research and Innovation
<http://www.mri.gov.on.ca/english/programs/ResearchFund.asp>

Precarn Incorporated
<http://www.precarn.ca/ProgramsFunding/index.html>

Going Global Innovation - Foreign Affairs and International Trade Canada
<http://www.tradecommissioner.gc.ca/eng/science/document.jsp?did=88060>

Industrial R & D Fellowships - Natural Sciences and Engineering Research Council of Canada
http://www.nserc-crsng.gc.ca/Partners-Partenaires/Programs-Programmes/IRDFProfile-BPRDIProfile_eng.asp

Industrial Research Assistance Program - National Research Council Canada
<http://www.nrc-cnrc.gc.ca/eng/ibp/irap/about/index.html>

Canadian Institutes of Health Research - Innovation and Industry Programs
<http://www.cihr-irsc.gc.ca/e/37788.html>

Canada Foundation for Innovation
<http://www.innovation.ca/en>

Communications Research Centre Canada - Industry Canada
<http://www.crc.gc.ca/en/html/crc/home/home>

Ontario Business Research Institute Tax Credit (OBRITC)
<http://www.rev.gov.on.ca/english/credit/ontti/>

Ontario Research and Development Tax Credit
<http://www.rev.gov.on.ca/en/credit/ordtc/index.html>

Scientific Research and Experimental Development Tax Incentive Program - Canada Revenue Agency
<http://www.cra-arc.gc.ca/sred/>

Mitacs Accelerate
<http://www.mitacs.ca/accelerate>

Youth Employment Program - National Research Council Canada
<http://www.nrc-cnrc.gc.ca/eng/services/irap/youth-initiatives.html>

SDTC Funding
http://www.sdtc.ca/index.php?page=sdtech-funding-niche&hl=en_CA